

AENC-ARC-ENV-REP-0202

Norwich to Tilbury

Volume 8: Examination Documents

**Document: 8.16 Health and Wellbeing and Socio-Economics
Recreation and Tourism Technical Note**

Final Issue A

May 2026

Planning Inspectorate Reference: EN020027

nationalgrid

Contents

1.	Introduction	1
1.1	Purpose of this Technical Note	1
1.2	Structure of this Technical Note	2
2.	Comparison of 2019 and 2025 IMD data	3
2.1	Introduction	3
2.2	Local Planning Authority Level Change	3
2.3	IMD change at LSOA level along the Project	10
2.4	Health Deprivation Domain Change at LSOA-level Along the Project	13
2.5	Conclusions	14
3.	Implications of IMD Updates	15
3.1	Introduction	15
3.2	Chapter 10 Health and Wellbeing	15
3.3	Chapter 15 Socio-economics, Recreation and Tourism	15
3.4	Summary	16

Table 2.1	Upper Tier Local Authority IMD ranks in 2019 and 2025	4
Table 2.2	Local Planning Authority IMD ranks in 2019 and 2025	4
Table 2.3	Change in deprivation ranking by domain for Local Planning Authorities between 2019 and 2025	8
Table 2.4	LSOAs Intersecting the Order Limits – Decile Change 2019 to 2025	10
Table 2.5	Summary of change in relative deprivation (2019 to 2025) by Project route section	11
Table 2.6	Summary of health deprivation and disability domain data by Project Section	13

Image 2.1	Percentage of LSOAs by deprivation quintile, 2019	7
Image 2.2	Percentage of LSOAs by deprivation quintile, 2025	7

Abbreviations	17
Glossary	18
Bibliography	20

Appendix A	Key Plan Identifying LSOAs and Wards Along the Project	
Appendix B	IMD 2019 and 2025 Change along the Project	
Appendix C	Change by LSOA Along the Project	
Appendix D	Health Deprivation and Disability Domain Change 2019-2025 Along the Project	

1. Introduction

1.1 Purpose of this Technical Note

1.1.1 The Ministry of Housing, Communities and Local Government (MHCLG) released an update to the English Indices of Deprivation (IoD) in October 2025, updating previously published data from 2019. The IoD measure relative levels of deprivation at Lower-layer Super Output Area (LSOA) level across England. Seven standalone deprivation domains (income; employment; education, skills and training; health deprivation and disability; crime; barriers to housing and services; and living environment) are combined to form an Index of Multiple Deprivation (IMD).

1.1.2 The Development Consent Order (DCO) application for Norwich to Tilbury (the 'Project') was submitted in August 2025. The submission documents included reference to IMD 2019 information in both **6.10 Environmental Statement Chapter 10 – Health and Wellbeing [APP-192]** and **6.15 Environmental Statement Chapter 15 – Socio-economics, Recreation and Tourism [APP-265]** as part of baseline information. Updates to the IMD published in October 2025 were not available at the point of submission.

1.1.3 The Examining Authority (ExA) has requested further information relevant to IMD data in their **Rule 17 - Request for further information relating to ancient woodlands, the approach to scenarios, environmental statement updates and bats [PD-019]**. The ExA stated in their Rule 17 letter:

'The ExA notes the applicant's responses to its first written questions (ExQ1) [REP3-074] HW 1.9, HW 1.10 and SET 1.1, with regard to the English Index of Multiple Deprivation (IMD) and the inclusion of more granular Lower Layer Super Output Areas (LSOA) data to reveal localised deprivation. The ExA seeks an addendum or technical note to ES chapters 10 (Health and Wellbeing) and 15 (Socio-economics, Recreation and Tourism), to be submitted by deadline 4 (Tuesday 12 May 2026), which compares the IMD 2019 and IMD 2025 for all local authorities, including county authorities, within which the proposed development is situated, along with a full technical analysis and conclusions arising from the comparison data. The addendum/ technical note should also include an assessment, together with conclusions, with regard to LSOAs and whether the comparison data provides more granular data that reveal localised deprivation.

ES chapters 10 and 15 should be updated with the additional information arising from the addendum/ technical note no later than deadline 6 (Tuesday 7 July 2026).'

1.1.4 This Technical Note presents an analysis of the updates to the IMD relevant to the Project. It includes an overview of both the IMD and information specific to the health deprivation and disability domain (which forms part of baseline information presented in **6.10 Environmental Statement Chapter 10 – Health and Wellbeing [APP-192]**). Where appropriate, and to aid understanding, information is presented at LSOA, ward and Local Planning Authority level. This Technical Note also provides conclusions in relation to localised deprivation along the Project alignment and

identifies whether the updated information would result in changes to assessment findings as set out within each of the following DCO submission documents:

- **6.10 Environmental Statement Chapter 10 – Health and Wellbeing [APP-192]**
- **6.15 Environmental Statement Chapter 15 – Socio-economics, Recreation and Tourism [APP-265]**

1.2 Structure of this Technical Note

1.2.1 This Technical Note is structured by the following sections:

Section 2 Compares and presents technical analysis of 2019 and 2025 deprivation data at Local Planning Authority (including county authority) and LSOA level along the Project alignment, for both the IMD and health deprivation and disability domain datasets.

Section 3 Reports on whether the latest release of IMD 2025 data would result in material changes to the assessments presented in **6.10 Environmental Statement Chapter 10 – Health and Wellbeing [APP-192]** and **6.15 Environmental Statement Chapter 15 – Socio-economics, Recreation and Tourism [APP-265]**.

2. Comparison of 2019 and 2025 IMD data

2.1 Introduction

2.1.1 This section presents a technical analysis of 2019 and 2025 IMD data at different spatial levels along the Project alignment. The 2025 IMD updates the 2019 framework while retaining the core seven-domain structure and overall weighting. When considering differences between IMD 2019 and 2025 data it is noted that there have been changes to the basis of assessment including indicator, methodological adjustment and boundary changes. The 2025 IMD is broader and more up-to-date: the set of indicators used has grown from 39 to 55, with 20 new indicators, 14 substantially revised indicators, and 21 indicators updated to reflect contemporary data sources. Notable changes include:

- Income domain: updated with counting of Universal Credit claimants
- Barriers to Housing and Services domain: reworked to include core homelessness, average broadband speed, and a new connectivity score
- Crime domain: has been expanded significantly, measuring 82 offence types (up from 37), including antisocial behaviour and weapon possession
- Living Environment domain: noise pollution and lack of outdoor space have been added
- A new rural analysis accompanies the index to better capture transport limits, service access and digital exclusion in rural areas
- Geographies have been refreshed to 2021 Census LSOA boundaries; implications of this have included that area ranks have shifted independently of whether there has been any localised change in deprivation.

2.1.2 The above changes mean that trends between 2019 and 2025 may reflect methodological updates rather than genuine differences and should therefore be interpreted with caution. Changes in this section are presented in terms of relative deprivation (i.e. changes in the ranking of LSOAs do not necessarily mean that an area has become more or less deprived, rather that it has changed in terms of its position relative to other areas). Similarly, changes in IMD position between 2019 and 2025 do not on their own indicate that living conditions for people in the area have improved or worsened.

2.1.3 Despite the above, broad spatial patterns of deprivation remain similar across England, with many previously most-deprived areas persisting in the top ranks, and urban areas continuing to dominate the most deprived list.

2.2 Local Planning Authority Level Change

2.2.1 Average IMD rankings for county authorities (as Upper Tier Local Authorities (UTLA)) are shown in Table 2.1, where a ranking of 1 represents the most deprived area and rankings of 151 (in 2019) or 153 (in 2025) represent the least deprived. Changes reflect a combination of both improvements and deteriorations across

spatial areas. The table shows that overall, IMD rankings at UTLA level have remained broadly comparable when considering the 2019 and 2025 datasets, with the exception of Essex where there has been a slightly more marked deterioration in relative deprivation between the two time periods.

Table 2.1 Upper Tier Local Authority IMD ranks in 2019 and 2025

Upper Tier Local Authority	Average Rank in IMD 2019 out of 151 Authorities	Average Rank in IMD 2025 out of 153 Authorities	Difference in Ranking
Norfolk	81	83	2 places
Suffolk	99	100	1 place
Essex	114	108	6 places
Thurrock	77	78	1 place

Source: MHCLG, IMD 2019 and IMD 2025 data

2.2.2 Average IMD rankings for Lower Tier Local Authorities (LTLA) along the Project alignment are presented in Table 2.2, with relevant Project alignment section for each Local Planning Authority identified in brackets. Again, the table illustrates the IMD ranking for each LTLA, where a ranking of 1 represents the most deprived area, and rankings of 317 (in 2019) or 296 (in 2025) represent the least deprived. The table also shows the percentile for each LTLA for both 2019 and 2025.

Table 2.2 Local Planning Authority IMD ranks in 2019 and 2025

Local Planning Authority (Project Section)	Average Rank in IMD 2019 out of 317 Authorities	Percentile (2019)	Average Rank in IMD 2025 out of 296 Authorities	Percentile (2025)	Difference in Ranking
Norwich (N/A)	61	20% most deprived	64	30% most deprived	3 places
South Norfolk (Section A)	225	30% least deprived	220	30% least deprived	5 places
Mid Suffolk (Section B)	229	30% least deprived	191	40% least deprived	38 places
West Suffolk (N/A)	176	50% least deprived	172	50% least deprived	4 places
Ipswich (N/A)	71	20% most deprived	84	30% most deprived	13 places
Babergh (Section C)	212	40% least deprived	184	40% least deprived	28 places
Tendring (Section C)	32	10% most deprived	28	10% most deprived	4 places

Local Planning Authority (Project Section)	Average Rank in IMD 2019 out of 317 Authorities	Percentile (2019)	Average Rank in IMD 2025 out of 296 Authorities	Percentile (2025)	Difference in Ranking
Colchester (Sections C and D)	181	50% least deprived	168	50% least deprived	13 places
Braintree (Section E)	203	40% least deprived	164	50% least deprived	39 places
Chelmsford (Section F and Section G)	260	20% least deprived	233	30% least deprived	27 places
Basildon (Section G)	111	40% most deprived	120	50% most deprived	9 places
Brentwood (Section F and Section G)	287	10% least deprived	262	20% least deprived	25 places
Thurrock ¹ (Section H)	116	40% most deprived	114	40% most deprived	2 places

Source: MHCLG, IMD 2019 and IMD 2025 data

- 2.2.3 Again, the overall IMD rankings for LTLAs along the Project alignment remain broadly comparable for most local authorities when considering the 2019 and 2025 datasets.
- 2.2.4 The most notable changes in deprivation ranking are observed in Braintree (from 203 out of 317 authorities in 2019 to 164 out of 296 authorities in 2025) and Mid Suffolk (from 229 out of 317 authorities in 2019 to 191 out of 296 authorities in 2025), indicating a **relative increase in deprivation** compared with the 2019 baseline. Notwithstanding this change, both local authority areas remain within or below the 50% least deprived nationally.
- 2.2.5 Conversely, Norwich and Ipswich, which were two of the three most deprived local authorities along the Project alignment in 2019 (and classified within the 20% most deprived nationally), have experienced a **relative improvement in ranking** and are now classified within the 30% most deprived in 2025. Tendring remains within the 10% most deprived Local Planning Authorities nationally, although a marginal change in ranking is noted, from 32 in 2019 to 28 in 2025.
- 2.2.6 The remaining Local Planning Authorities, including South Norfolk and West Suffolk, **demonstrate relative stability**, with minimal changes to their overall ranking and percentile position between 2019 and 2025.

Deprivation by LSOA IMD quintile

- 2.2.7 LSOAs across England are divided into five equal groups, or quintiles, from Quintile 1 (most deprived) through to Quintile 5 (least deprived). Image 2.1 and Image 2.2 show

¹ Note that, as a unitary authority, Thurrock sits in both UTLA and LTLA categories and information has been provided for each

the proportion of LSOAs by quintile for each Local Planning Authority, including county authorities for 2019 and 2025 IMD datasets. The two charts show that there has been relatively little movement at county (UTLA) level in terms of the proportion of LSOAs within each quintile. At LTLA level, much of the change that has occurred has taken place in the 'middle ground' rather than at the extremes of 'most' and 'least' deprived areas. Some exceptions to this include:

- Thurrock: shows a slight increase in the proportion of LSOAs within the most deprived quintile (from 11.2% to 14%) and a reduction of LSOAs within the least deprived quintile (from 12.2% to 8%)
- Basildon: shows a slight increase in the proportion of LSOAs in both the most and least deprived quintiles (increasing from 23.6% to 24.1% for most deprived LSOAs and 23.6% to 27.7% for least deprived LSOAs)
- Chelmsford: an increase in the proportion of LSOAs in the least deprived quintile from 0.9% (2019) to 4.4% (2025)
- Braintree: an increase in the proportion of LSOAs in the most deprived quintile from zero to 4.5%; a reduction in the proportion of LSOAs in the least deprived quintile from 54.3% (2019) to 12.5% (2025)
- Norwich: a decrease in the proportion of LSOAs in the most deprived quintile from 39.8% (2019) to 31.8% (2025)
- Mid Suffolk: shows a decrease in the proportion of LSOAs in the least deprived quintile from 23.2% to 10.5% between 2019 and 2025
- Babergh: although this LTLA has no LSOAs in the most deprived 20% in either 2019 or 2025, the proportion of LSOAs within the least deprived quintile has decreased from 20.4% (2019) to 9.1% (2025).

Image 2.1 Percentage of LSOAs by deprivation quintile, 2019

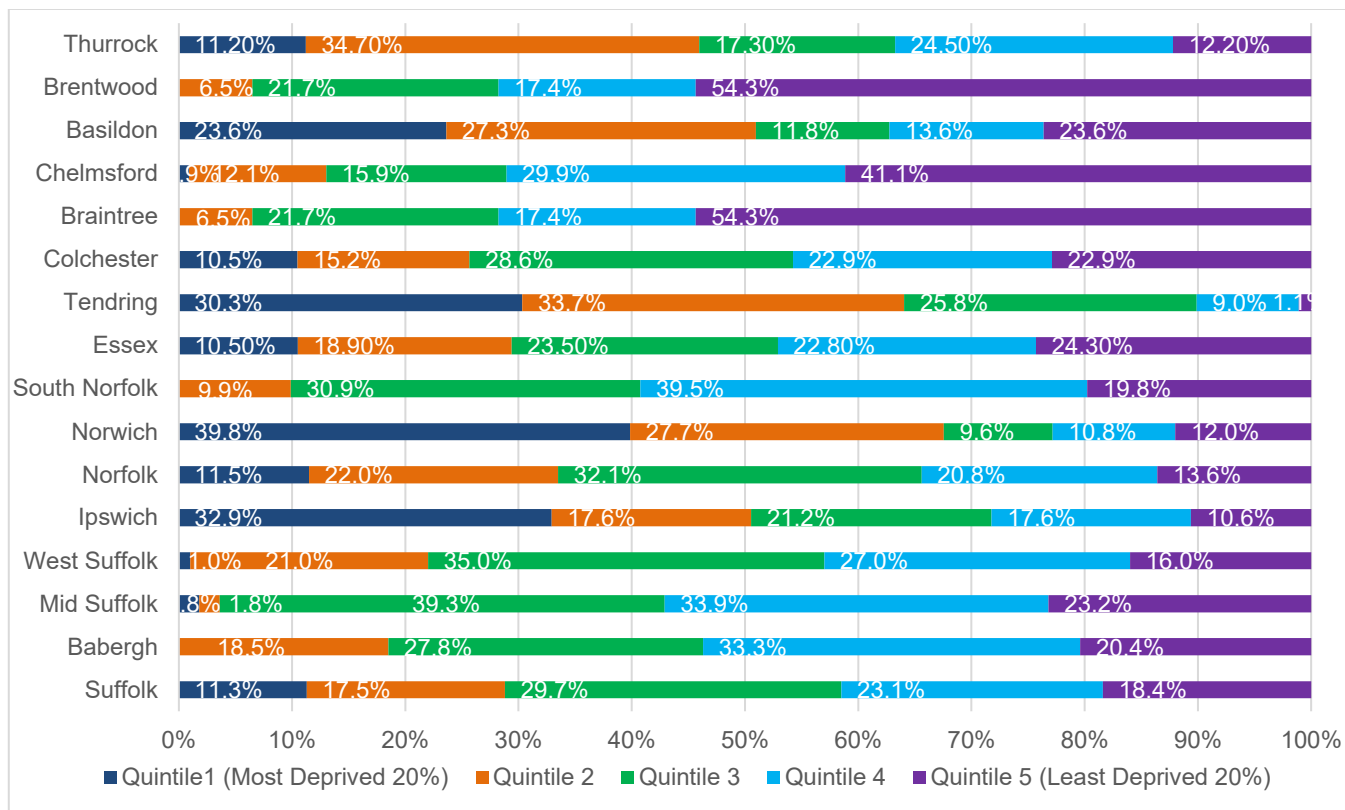
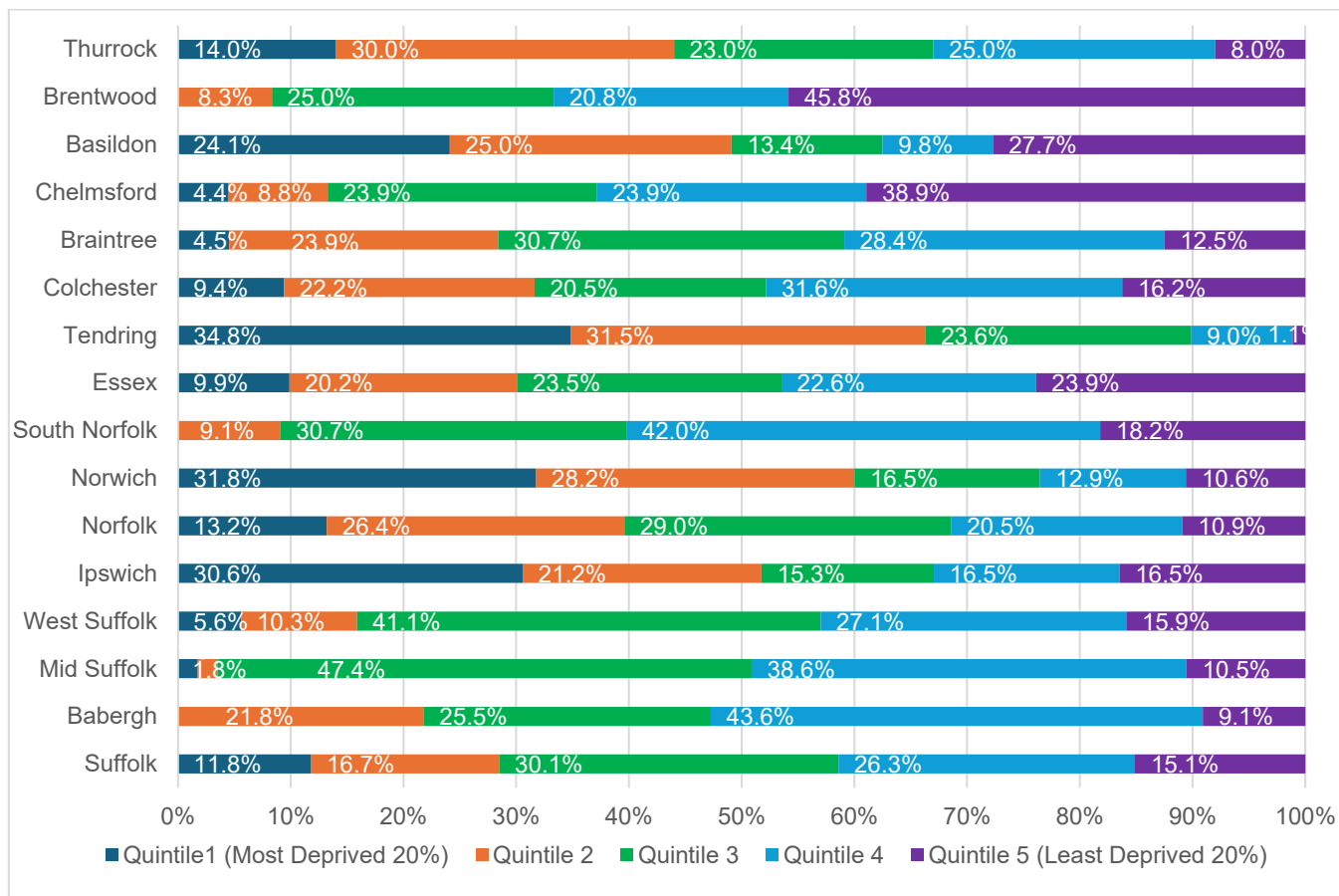


Image 2.2 Percentage of LSOAs by deprivation quintile, 2025



Change by deprivation domain 2019-2025

2.2.8 As noted earlier, the IMD is made up of seven individual deprivation domains; the weighting each domain is given in both the 2019 and 2025 IMD is shown in brackets below, although as noted earlier, the indicators making up individual domains have changed between the 2019 and 2025 IMD:

- Income Deprivation (22.5%)
- Employment Deprivation (22.5%)
- Education, Skills, and Training Deprivation (13.5%)
- Health Deprivation and Disability (13.5%)
- Crime (9.3%)
- Barriers to Housing and Services (9.3%)
- Living Environment Deprivation (9.3%).

2.2.9 The change in deprivation ranking by individual domain for Local Planning Authorities, including county authorities, between 2019 and 2025 is shown in Table 2.3. Orange has been used to demarcate where Local Planning Authority ranking (relative to other local authorities) has stayed exactly the same, or within up to five places in either direction between 2019 and 2025; the green colouring shows where there has been an improvement in rank (beyond five places) relative to other Local Planning Authorities; red has been used to show where there has been a deterioration in rank (beyond five places) relative to other authorities.

Table 2.3 Change in deprivation ranking by domain for Local Planning Authorities between 2019 and 2025

Local Planning Authority	Income	Employment	Education, Skills & Training	Health Deprivation & Disability	Crime	Barriers to Housing & Services	Living Environment
Norfolk	9	9	-	11	-10	-17	8
Norwich (N/A)	8	-	-6	27	-40	-57	-12
South Norfolk (Section A)	-	-3	-10	-5	-18	-12	25
Suffolk	-3	3	-2	-3	10	-10	8
Mid Suffolk (Section B)	10	25	14	50	-30	25	18
West Suffolk (N/A)	16	1	17	-12	-2	-48	50

Local Planning Authority	Income	Employment	Education, Skills & Training	Health Deprivation & Disability	Crime	Barriers to Housing & Services	Living Environment
Ipswich (N/A)	17	9	10	-5	-25	-11	-54
Babergh (Section C)	17	11	29	17	-46	15	33
Essex	1	1	4	-1	-7	2	-1
Tendring (Section C)	27	4	-14	-2	6	-179	-7
Colchester (Sections C and D)	-8	-5	-15	-17	-37	82	-20
Braintree (Section E)	-12	-3	3	-7	-41	-69	-21
Chelmsford (Section F and Section G)	-1	-5	10	-23	-42	81	-21
Basildon (Section G)	7	-1	18	-16	31	40	13
Brentwood (Section F and Section G)	-	-19	18	-9	33	31	-50
Thurrock (Section H)	3	-13	43	-23	7	-16	36

2.2.10 The table shows that, for the counties of Suffolk, Norfolk and Essex, deprivation levels by individual domain have remained broadly similar between 2019 and 2025. Notable changes at individual domain level include:

- LTLAs within Norfolk exhibit deteriorations between 2019 and 2025 in relation to crime and barriers to housing and services domains in particular
- LTLAs within Suffolk show some improvement in relative deprivation across a number of domains (particularly in relation to income, employment, education, skills and training). West Suffolk and Ipswich Boroughs show a worsening in relative deprivation particularly in relation to crime and barriers to housing and services domains
- Across Essex LTLAs along the Project route, domains which have seen the greatest degree of change are the health deprivation and disability domain

(all Districts have seen a worsening in relative deprivation in this domain, with the greatest change in Chelmsford and Colchester) and the living environment domain (Brentwood exhibiting the greatest degree of change here). Worsening in the health domain is likely to be driven by a number of factors, for example Chelmsford in particular has seen an increase in the number of residents aged over 65, with associated health needs. Whilst Colchester as a whole has remained in the 50% least deprived areas overall in the UK, specific communities within the local authority (e.g. Greenstead) are ranked in the most deprived 10% LSOAs nationally.

2.3 IMD change at LSOA level along the Project

- 2.3.1 Appendix A contains a key plan (Figure 1) which shows the Order Limits for the Project, and identifies the LSOAs which intersect with the Order Limits. Figure 2 (Appendix B) provides IMD data for 2019 and 2025 at LSOA level along the Project, again including Order Limits for the Project and ward boundaries. IMD data has been grouped into five categories, or quintiles, with darker colours relating to areas of higher deprivation. As with the review of data for Local Planning Authority level, direct comparison between 2019 and 2025 datasets is complicated by the changes in the basis of calculation of IMD and changes in spatial boundaries of LSOAs. However, the figures provide a helpful indication of relative change in deprivation along the Project.
- 2.3.2 A table setting out all LSOAs which intersect with the Order Limits, the corresponding ward in which they are located, and the IMD deprivation decile in which they sit for both 2019 and 2025 is provided at Appendix C. A summary table identifying those LSOAs for which there has been a **change in decile over time** (positive or negative) is provided in Table 2.4. Note that positive numbers reflect an improvement in decile ranking; negative numbers reflect movement into a more deprived decile. The table has been structured according to Project section for ease of reference.

Table 2.4 LSOAs Intersecting the Order Limits – Decile Change 2019 to 2025

LSOA	Project Section	Ward	IMD Deprivation Decile 2019 (1=most deprived)	IMD Deprivation Decile 2025 (1=most deprived)	Change
Mid Suffolk 011E	Section B	Battisford & Ringshall	10	8	-2
Tendring 005A	Section C	Ardleigh & Little Bromley	6	8	+2
Tendring 003E	Section C	Lawford, Manningtree & Mistley / The Bentleys & Frating	2	5	+3
Braintree 014A	Section E	Kelvedon & Feering	8	6	-2

LSOA	Project Section	Ward	IMD Deprivation Decile 2019 (1=most deprived)	IMD Deprivation Decile 2025 (1=most deprived)	Change
Braintree 014D	Section E	Kelvedon & Feering	6	4	-2
Chelmsford 001A	Section F	Boreham & The Leighs	8	6	-2
Chelmsford 001C	Section F	Broomfield & The Walthams	7	5	-2
Brentwood 009B	Section G	Herongate, Ingrave & West Horndon	9	7	-2
Thurrock 004D	Section H	Orsett	9	7	-2
Thurrock 010C	Section H	Little Thurrock Blackshots	8	10	+2

2.3.3 A descriptive summary of the main changes in deprivation at LSOA level by route section (as informed by the figures at Appendix A and Appendix B, and data table presented at Appendix C) is provided in Table 2.5.

Table 2.5 Summary of change in relative deprivation (2019 to 2025) by Project route section

Project Section	Summary of change between 2019 and 2025
A	LSOAs through which the Project alignment passes have stayed broadly similar or seen a slight improvement in terms of relative deprivation between 2019 and 2025. More deprived areas within this section include to the north of Diss (LSOA South Norfolk 014B) which is in the 10% most deprived LSOAs for domains including barriers to housing and services and living environment.
B	The majority of LSOAs have stayed broadly the same or seen a slight improvement in relative deprivation. A slight worsening can be seen for Mid Suffolk 010A, which covers the northern area of Needham Market; this LSOA remains less deprived than 63% of neighbourhoods in England but has moved from the eighth to seventh decile between 2019 and 2025. Other LSOAs that have seen a marginal negative relative change are Mid Suffolk 011B (Great Blakenham area) and Mid Suffolk 012D (Sharpstone Street and Henley areas); however both LSOAs remain in the same decile (decile 8) for both 2019 and 2025.
C	Very little change in terms of overall deprivation levels in LSOAs between 2019 and 2025 along this section of the Project.

Project Section	Summary of change between 2019 and 2025
D	Very little change in terms of overall deprivation levels in LSOAs between 2019 and 2025 along this section of the Project.
E	<p>There is a slight worsening for some LSOAs in terms of relative deprivation within this section of the Project. LSOAs which have experienced a change in overall ranking include Braintree 014D (which covers the area of Newtown) and which has moved from decile 6 to decile 4 between 2019 and 2025. This means that the LSOA is more deprived than most neighbourhoods in England, in particular with reference to the education, skills and training domain and barriers to housing and services domain.</p> <p>Other LSOAs within this section of the Project that are more deprived than other neighbourhoods in England include Braintree 012E (Tye Green area) and Braintree 015C (the area to the north of Witham); levels of deprivation for these LSOAs have, however, stayed broadly the same between 2019 and 2025.</p>
F	<p>There has been a slight change in relative deprivation in areas to the north of Chelmsford through which the Project alignment passes. LSOAs showing a slight worsening include Chelmsford 001A (Great Leighs area) and Chelmsford 001C (Great Waltham and Little Waltham areas). Despite a lower IMD ranking in 2025, Chelmsford 001A remains less deprived than 58% of neighbourhoods in England. Chelmsford 001C on the other hand is more deprived than 52% of neighbourhoods in England, particularly in relation to crime, living environment and barriers to housing and services; it is less deprived than 86% of neighbourhoods in relation to health and disability.</p> <p>Areas of higher deprivation to the south west of Chelmsford (e.g. the Chelmsford 018B LSOA which covers communities such as Margaretting) have stayed broadly the same between 2019 and 2025.</p>
G	<p>LSOAs through which the Project passes have stayed broadly the same or seen a slight improvement in terms of relative deprivation between 2019 and 2025. Marginal positive change in rankings can be seen in LSOAs such as Brentwood 003B (Haverings Grove area); marginal decline in rankings can be seen in other LSOAs such as Brentwood 009B (West Horndon, to the west of Basildon).</p>
H	<p>Not much visible change in LSOA deprivation rankings for those LSOAs intersecting with the Order Limits between 2019 and 2025. Exceptions include Thurrock 004D (Horndon on the Hill area) and Thurrock 013D (West Tilbury / Linford area) which have seen a slight change in ranking.</p> <p>This section of the Project alignment also passes through areas of existing deprivation which has not changed significantly between 2019 and 2025, notably Thurrock 012F (the north east area of Chadwell St Mary) which is more deprived than 91% of neighbourhoods in England, driven by deprivation across all domains with the exception of living environment.</p>

2.4 Health Deprivation Domain Change at LSOA-level Along the Project

- 2.4.1 Figure 3 (Appendix D) includes mapping which shows IMD health deprivation and disability domain data for 2019 and 2025 at LSOA level along the Project, including Order Limits and ward boundaries for the Project. Data has been grouped into four categories, with darker colours relating to areas of higher deprivation.
- 2.4.2 The core indicators used to assess health deprivation and disability have remained broadly the same between 2019 and 2025 (i.e. morbidity, disability, premature mortality and mental health), however, data has been updated to include a broader range of conditions (for example an expanded mental health scope), and refreshed data relating to other indicators. Boundary changes to LSOAs between the datasets may also impact rankings independently of actual health changes. Therefore, while direct comparison is not possible, the mapping provides a helpful indication of relative changes in health deprivation along the Project
- 2.4.3 Key findings from this review are summarised by Project section in Table 2.6.

Table 2.6 Summary of health deprivation and disability domain data by Project Section

Project Section	Summary of change between 2019 and 2025
A	There has been a slight change in distribution of health deprivation by LSOA between 2019 and 2025 through this Project section. Areas to the north of Diss (LSOA South Norfolk 014B) stand out as experiencing slightly higher levels of health deprivation than surrounding LSOAs, although this is LSOA is less deprived than 63% of neighbourhoods nationally in relation to health deprivation specifically.
B	Areas relatively more deprived in relation to the health deprivation and disability domain include between Stowmarket and Needham Market; LSOAs in this area (e.g. Mid Suffolk 005D, 010A and 011A) however remain less deprived than 69%, 62% and 64% of neighbourhoods in England respectively.
C	Very little change in terms of health deprivation and disability domain rankings in LSOAs between 2019 and 2025 along this section of the Project, with the exception to the north east of Colchester (within Tendring District Council). Here, more deprived LSOAs reported in the 2025 dataset include Tendring 005B (Ardleigh and Little Bromley areas) and Tendring 003E (Little Bentley and Horsley Cross areas) which are more deprived than 54% and 62% of neighbourhoods respectively for the health deprivation and disability domain. In 2019 these LSOAs were in the 50% and 20% most deprived neighbourhoods respectively.
D	Very little change in terms of deprivation levels under the health deprivation and disability domain for LSOAs between 2019 and 2025 along this section of the Project.
E	As with the overall IMD changes reported earlier in relation to this Project section, there have been some changes in LSOA ranking under the health deprivation and disability domain. LSOAs such as Braintree 015C and Braintree 012E are more deprived than 75% and 57% of neighbourhoods

Project Section	Summary of change between 2019 and 2025
	in England respectively under the 2025 dataset. The change in deprivation ranking has been greatest for Braintree 012E, which was in the 30% least deprived LSOAs for this domain in 2019.
F	There is little change evident in deprivation relating to the health deprivation and disability domain for LSOAs through this Project section.
G	LSOAs through which the Project passes have stayed broadly the same in ranking between 2019 and 2025. Some marginal change is visible in LSOAs such as Basildon 002A (Queen's Park area to the north of Billericay, which is in the vicinity of the Project) which is now more deprived than 74% of neighbourhoods in England for this domain. Other LSOAs seeing a slight change in ranking include Brentwood 003B (Haverings Grove) from 30% least deprived for this domain to less deprived than 65% of neighbourhoods.
H	<p>As for the overall IMD, there is not much visible change in LSOA deprivation rankings for those LSOAs intersecting with the Order Limits between 2019 and 2025.</p> <p>It is noted again that this section of the Project does pass through areas of existing deprivation which have not changed significantly between 2019 and 2025, notably Thurrock 012F (the north east area of Chadwell St Mary) which is more deprived than 82% of neighbourhoods in England for the health deprivation and disability domain; and Thurrock 010A (Orsett Heath area) which is more deprived than 77% of neighbourhoods in England for this domain.</p>

2.5 Conclusions

- 2.5.1 The analysis of IMD datasets from 2019 and 2025 demonstrates that, while there have been some changes in relative deprivation rankings across Local Planning Authorities and LSOAs along the Norwich to Tilbury Project, overall patterns remain broadly consistent. Most areas either maintained their position or experienced only minor shifts in ranking, with some exceptions in the Braintree and Mid Suffolk areas, which saw a relative increase in deprivation, and Norwich and Ipswich, which saw improvements.
- 2.5.2 At the granular LSOA level, changes in deprivation rankings are generally modest and often influenced by methodological updates, indicator revisions, and boundary changes rather than substantive shifts in actual living conditions. The health deprivation and disability domain analysis reflects a similar trend, with most areas showing little change and any variations largely attributable to updated data sources and expanded definitions.

3. Implications of IMD Updates

3.1 Introduction

- 3.1.1 This section considers the implications of the review of updated IMD 2025 information on the assessments provided in **6.10 Environmental Chapter 10 – Health and Wellbeing [APP-192]** and **6.15 Environmental Chapter 15 – Socio-economics, Recreation and Tourism [APP-265]**.

3.2 Chapter 10 Health and Wellbeing

- 3.2.1 The release of the 2025 IMD data provides a more current understanding of deprivation levels, including the health deprivation and disability domain, along the Project. Incorporating these updated datasets into the assessment of baseline conditions enables reflection of more recent socio-economic shifts, changes in health outcomes, and updates to relevant indicators. In areas where there has been a relative increase in deprivation, for example parts of Braintree and Mid Suffolk, the updated data may highlight greater vulnerability among local populations. This could require targeted consideration of potential health impacts, particularly in relation to capacity for community resilience. Conversely, areas showing improved rankings, such as Norwich and Ipswich, may be less susceptible to adverse health outcomes than previously assessed.
- 3.2.2 However, the overall pattern of deprivation along the Project has remained broadly consistent, and changes in IMD rankings are largely a function of methodological adjustments and boundary revisions rather than dramatic shifts in underlying living conditions. As a result, the updated IMD data is not considered to materially alter the overall conclusions of **6.10 Environmental Chapter 10 – Health and Wellbeing [APP-192]**. The principal areas of concern remain those with persistently high levels of deprivation, where health inequalities and environmental vulnerabilities are most pronounced, which has already been identified from 2019 data. While the 2025 data may refine the identification of these hotspots and help enable focus on aspects such as local priorities as part of community benefits approach, or focused engagement as part of community liaison during pre-commencement and construction phases, it does not necessitate fundamental revisions to the established assessment findings.
- 3.2.3 Finally, it is appreciated that there are people living in deprivation in all communities. The Health and Wellbeing assessment has already identified these more vulnerable populations and taken them into consideration.

3.3 Chapter 15 Socio-economics, Recreation and Tourism

- 3.3.1 Overall, IMD data indicates that deprivation levels across the local and county authorities along the Project are broadly consistent between 2019 and 2025. While some authorities have experienced relative worsening or improvement in deprivation rankings, these shifts are generally marginal and do not materially alter the overall deprivation profile of local authorities along the Project.

- 3.3.2 When compared with baseline findings provided in **6.15 Environmental Statement Chapter 15 - Socio-economics, Recreation and Tourism [APP-265]**, Tendring remains the most deprived LPA within the Wider Study Area, a position that continues to suggest the area is most vulnerable and sensitive to change across the Wider Study Area. Norwich and Ipswich also continue to exhibit high levels of deprivation, ranking as the second and third most deprived LPAs within the Wider Study Area, respectively. However, both LPAs, which were previously classified within the 20% most deprived nationally, have shown an improvement in ranking and are classified within the 30% most deprived in 2025.
- 3.3.3 On the basis that there have been limited changes to the baseline overall IMD rankings, and that IMD rankings for LPAs within the Wider Study Area remain broadly comparable when comparing the 2019 and 2025 datasets, the medium sensitivity assigned to the economy and employment receptors within the Wider Study Area in **6.15 Environmental Statement Chapter 15 – Socio-economics, Recreation and Tourism [APP-265]** remains appropriate and valid.
- 3.3.4 Therefore, the assessment findings in **6.15 Environmental Statement Chapter 15 – Socio-economics, Recreation and Tourism [APP-265]** would not be materially altered by the 2025 IMD data.

3.4 Summary

- 3.4.1 A review and comparison of the 2019 and 2025 IMD data confirm that the release of the 2025 dataset does not materially alter the sensitivity or assessment outcomes presented in both **6.10 Environmental Statement Chapter 10 – Health and Wellbeing [APP-192]**, and **6.15 Environmental Statement Chapter 15 – Socio-economics, Recreation and Tourism [APP-265]**. As such, the existing assessment findings remain robust and valid.
- 3.4.2 Updates to both chapters, including changes to baseline information as relevant to each assessment and updating assessment sections as necessary, will be submitted prior to Deadline 6 of the Examination as required by the Examining Authority.

Abbreviations

Abbreviation	Full Reference
DCO	Development Consent Order
ES	Environmental Statement
ExA	Examining Authority
IoD	Indices of Deprivation
IMD	Index of Multiple Deprivation
MHCLG	Ministry for Housing, Communities and Local Government
LPA	Local Planning Authority
LSOA	Lower-layer Super Output Area
LTLA	Lower Tier Local Authority
UTLA	Upper Tier Local Authority

Glossary

Term	Description
Decile	One of ten equal groups that data are divided into when ranked from lowest to highest. In the context of deprivation indices, a decile of 1 denotes the 10% most deprived areas and a decile of 10 denotes the 10% least deprived areas.
English Indices of Deprivation	A set of measures used to assess relative levels of deprivation across small geographic areas in England, based on multiple domains such as income, employment, health, education, crime, housing, and living environment.
Environmental Statement (ES)	The main output from the EIA process, an ES is the report required to accompany an application for development consent (under the Infrastructure Planning (EIA) Regulations 2017) to inform public and stakeholder consultation and the decision on whether a project should be allowed to proceed. The EIA Regulations set out specific requirements for the contents of an ES for Nationally Significant Infrastructure Projects.
Index of Multiple Deprivation	A composite measure that combines seven weighted deprivation domains (income, employment, education/skills, health and disability, crime, barriers to housing and services, and living environment) to produce a single relative deprivation rank for small areas in England. It is used to identify and compare neighbourhoods with higher or lower levels of overall deprivation for policy, planning and research purposes.
Lower Super Output Area	A standardised small-area geography used in England and Wales for reporting statistics. LSOAs typically contain around 1,000 - 3,000 residents and are designed to be socially homogeneous and stable over time, enabling consistent comparison of local indicators such as deprivation, health, and service access.
Lower Tier Local Authority	LTLAs include district, borough, and city councils and operate below county councils (upper tier authorities) in the local government hierarchy.
Order Limits	The defined boundaries within which a project or development is legally permitted to take place, as specified in a Development Consent Order (DCO). Order Limits typically outline the extent of land or area affected by the proposed works.
Percentile	A value that indicates the relative position of an observation within a ranked dataset, expressed as the percentage of values that fall below it. For example, a local authority at the 20th percentile is more deprived than 20% of areas and less deprived than the remaining 80%.

Term	Description
Quintile	One of five equal groups that a dataset is divided into when ranked from lowest to highest. In deprivation analysis, Quintile 1 includes the 20% most deprived areas, while Quintile 5 includes the 20% least deprived areas.
Upper Tier Local Authority	UTLAs include county councils, metropolitan boroughs, unitary authorities, and London boroughs, and operate above lower tier authorities in the local government structure.
Wider Study Area	This comprises the spatial extent of the Local Planning Authority areas through which the Order Limits pass together with Norwich City Council and Ipswich Borough Council (adjacent to the Project) and West Suffolk Council (where the Project office is located).

Bibliography

Ministry of Housing, Communities and Local Government (2019) English indices of deprivation 2019. Available at: <https://www.gov.uk/government/statistics/english-indices-of-deprivation-2019> (Accessed: 29 April 2026).

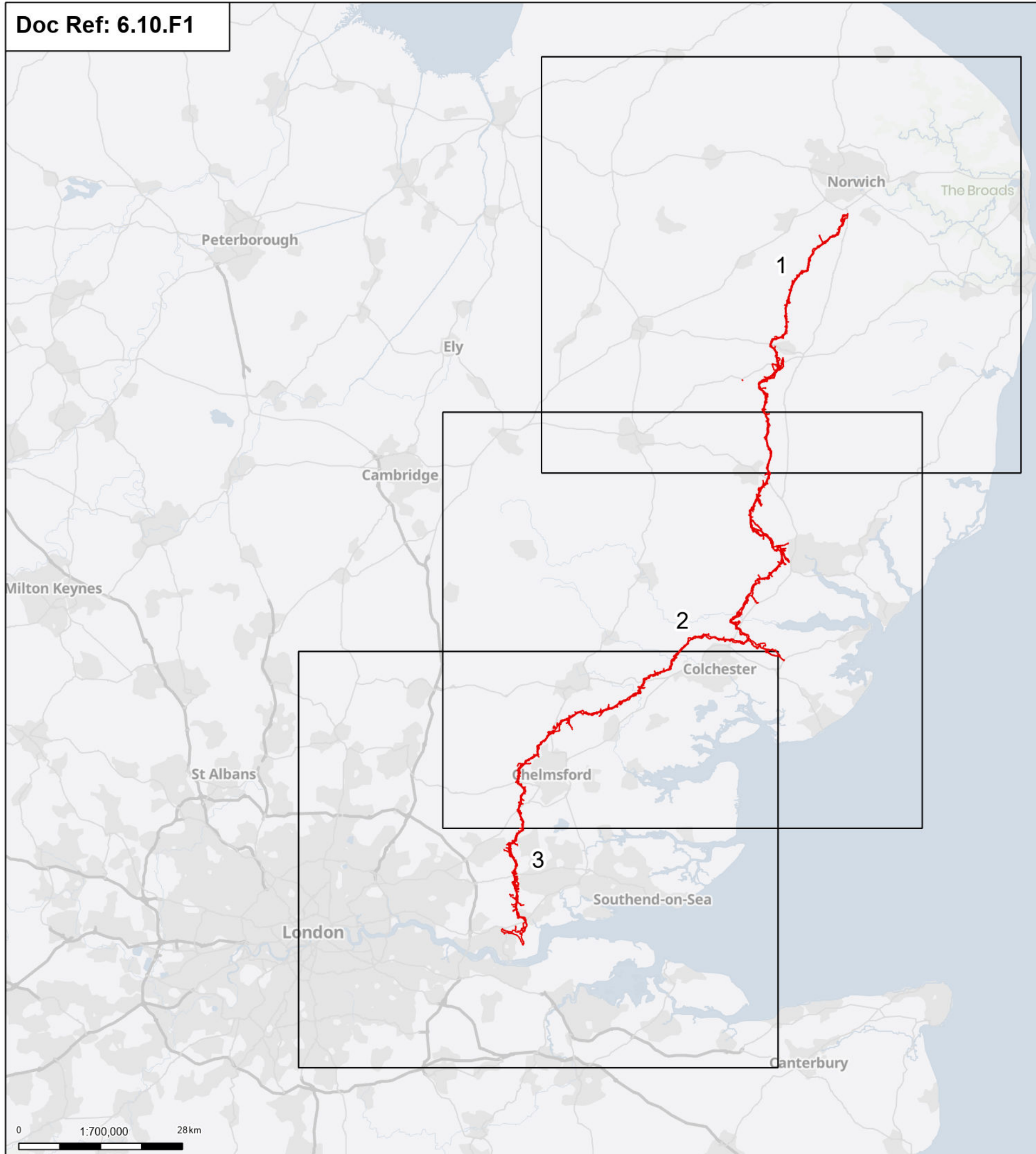
Ministry of Housing, Communities and Local Government (2025). English indices of deprivation 2025. Available at: <https://deprivation.communities.gov.uk/> (Accessed: 29 April 2026).

Appendix A. Key Plan Identifying LSOAs and Wards Intersecting with the Project

Appendix A

Key Plan Identifying LSOAs and Wards Along the Project

A.1 Key plan identifying LSOAs and wards along the Project



Order limits
Page

Notes: © Crown copyright and database rights 2025 Ordnance Survey 010031673, Contains public sector information licensed under the Open Government Licence v3.0, © National Grid UK



Rev	Date	Description	Drawn	Check	Approv
A	May 2026	FOR DCO APPLICATION	NB	AF	KB

PROJECT:
nationalgrid Norwich to Tilbury

Planning Inspectorate App Number: EN020027
Regulation 5(2)(a)

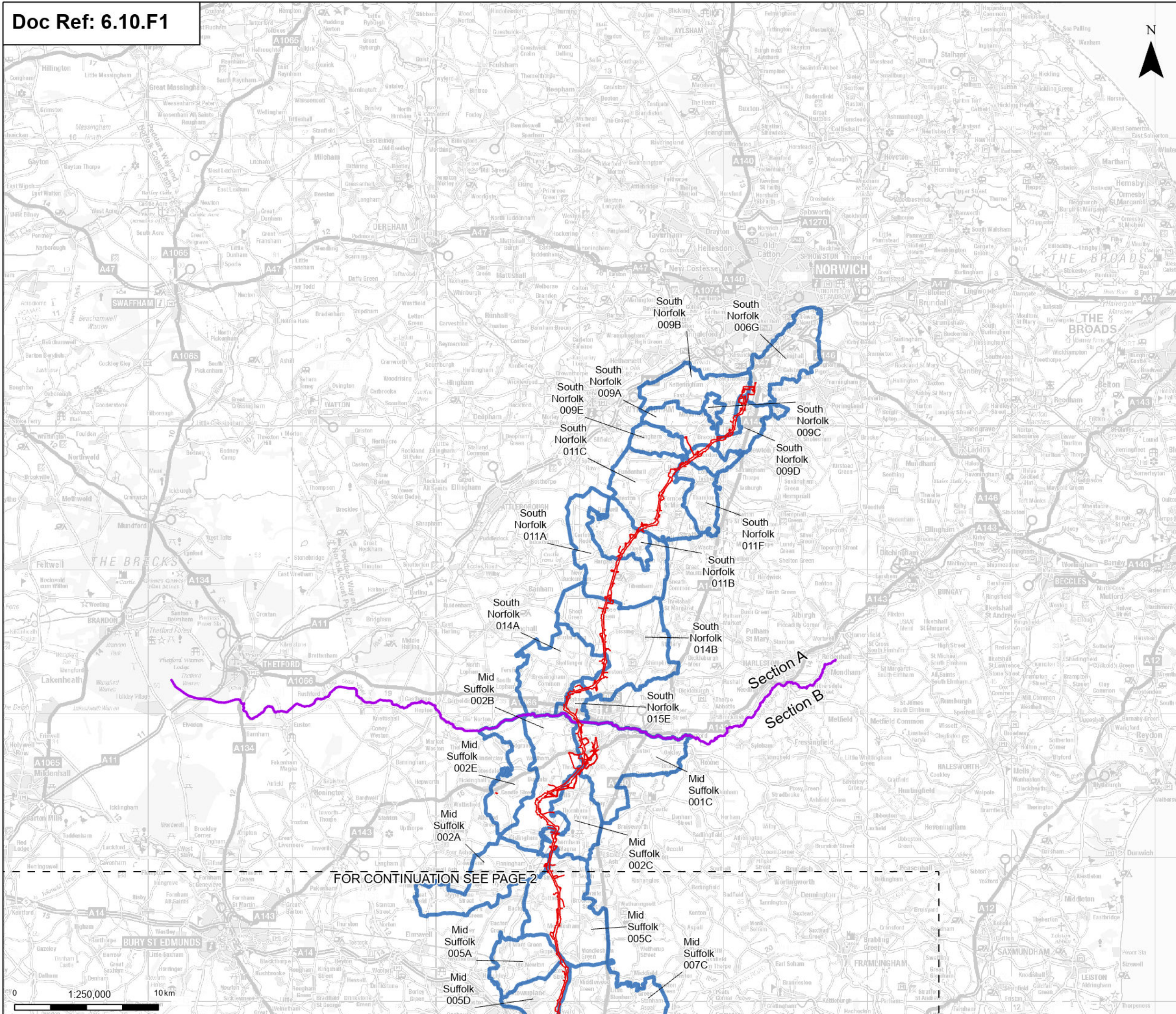
Title:
Figure 1 - LSOA boundary key plan Overview

Designed	A. Powell	Date	May 26
Drawn	N. Banu	Date	May 26
Checked	A. Fell	Date	May 26
Approved	K. Burrows	Date	May 26
Scale:	1:700,000	Datum:	AOD
Original Size:	A3	Grid:	OS
Suitability Code:	A2	Project Number:	10059280

Suitability Description:
Accepted as Concept Stage

Drawing Number:
10059280-ARC-EGN-ZZ-DR-ZZ-00916
Revision:
A

0 1:700,000 28km

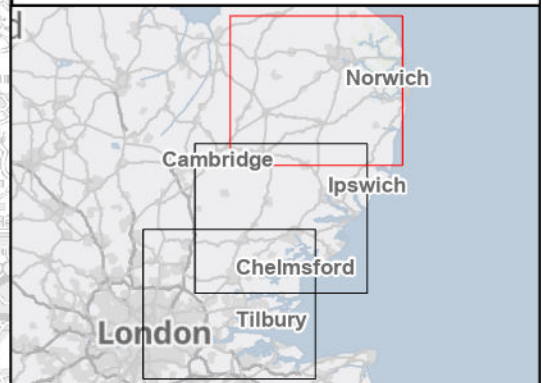


Order limits
— Project section line
 Sheet index cutline

Discipline specific constraints
 LSOA boundaries



Notes: © Crown copyright and database rights 2025 Ordnance Survey 0100031673, Contains public sector information licensed under the Open Government Licence v3.0, © National Grid UK



Rev	Date	Description	Drawn	Check	Approv
A	May 2026	FOR DCO APPLICATION	NB	AF	KB

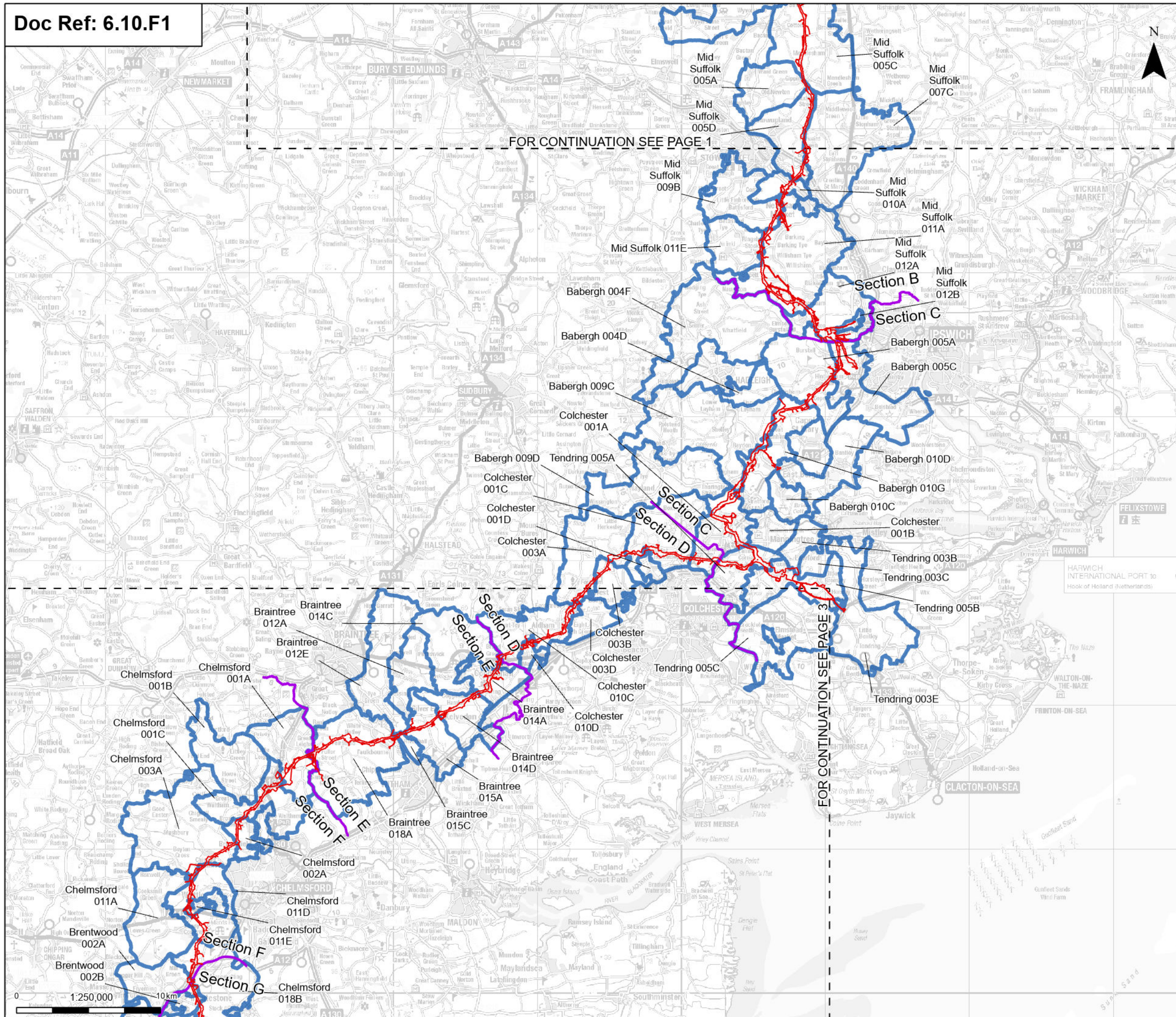
PROJECT:
nationalgrid Norwich to Tilbury
 Planning Inspectorate App Number: EN020027
 Regulation 5(2)(a)

Title:
 Figure 1 - LSOA boundary key plan
 Page 1 of 3

Designed	A. Powell	Date	May 26
Drawn	N. Banu	Date	May 26
Checked	A. Fell	Date	May 26
Approved	K. Burrows	Date	May 26
Scale:	1:250,000	Datum:	AOD
Original Size:	A3	Grid:	OS
Suitability Code:	A2	Project Number:	10059280

Suitability Description: Accepted as Concept Stage

Drawing Number:	10059280-ARC-EGN-ZZ-DR-ZZ-00916	Revision:	A
-----------------	---------------------------------	-----------	---



▬ Order limits
▬ Project section line
 Sheet index cutline
Discipline specific constraints
 LSOA boundaries

FOR CONTINUATION SEE PAGE 1

FOR CONTINUATION SEE PAGE 3

Notes: © Crown copyright and database rights 2025 Ordnance Survey 100031673, Contains public sector information licensed under the Open Government Licence v3.0, © National Grid UK



Rev	Date	Description	Drawn	Check	Approv
A	May 2026	FOR DCO APPLICATION	NB	AF	KB

PROJECT:
nationalgrid Norwich to Tilbury

Planning Inspectorate App Number: EN020027
 Regulation 5(2)(a)

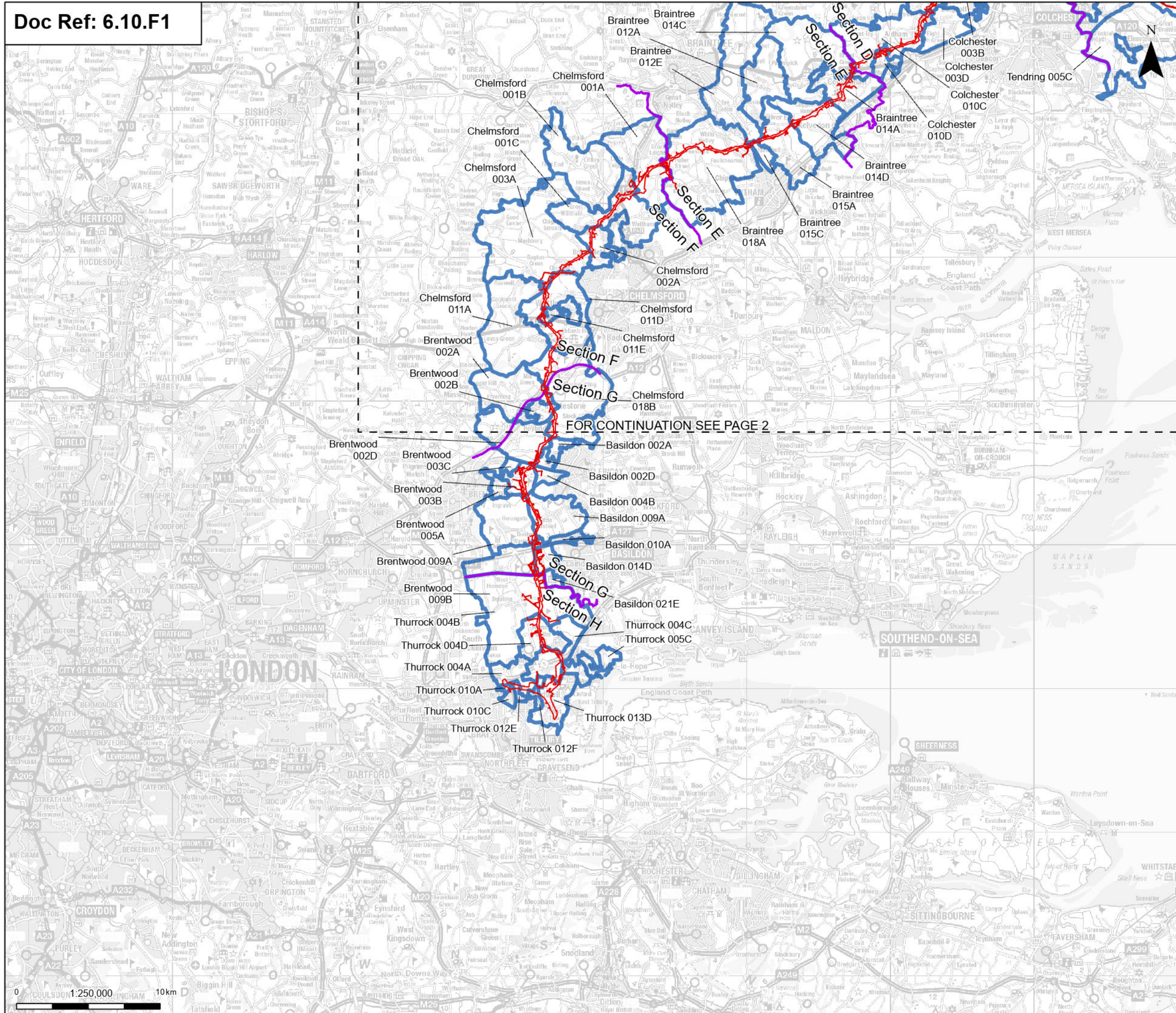
Title:
Figure 1 - LSOA boundary key plan
 Page 2 of 3

Designed	A. Powell	Date	May 26
Drawn	N. Banu	Date	May 26
Checked	A. Fell	Date	May 26
Approved	K. Burrows	Date	May 26
Scale:	1:250,000	Datum:	AOD
Original Size:	A3	Grid:	OS
Suitability Code:	A2	Project Number:	10059280

Suitability Description:
 Accepted as Concept Stage

Drawing Number:
 10059280-ARC-EGN-ZZ-DR-ZZ-00916

Revision:
A



▬ Order limits
▬ Project section line
 Sheet index cutline
Discipline specific constraints
 LSOA boundaries

Notes: © Crown copyright and database rights 2025 Ordnance Survey 1000031673, Contains public sector information licensed under the Open Government Licence v3.0, © National Grid UK



Rev	Date	Description	Drawn	Check	Approv
A	May 2026	FOR DCO APPLICATION	NB	AF	KB

PROJECT:
 nationalgrid Norwich to Tilbury
 Planning Inspectorate App Number: EN020027
 Regulation 5(2)(a)

Title:
 Figure 1 - LSOA boundary key plan
 Page 3 of 3

Designed	A. Powell	Date	May 26
Drawn	N. Banu	Date	May 26
Checked	A. Fell	Date	May 26
Approved	K. Burrows	Date	May 26
Scale:	1:250,000	Datum:	AOD
Original Size:	A3	Grid:	OS
Suitability Code:	A2	Project Number:	10059280

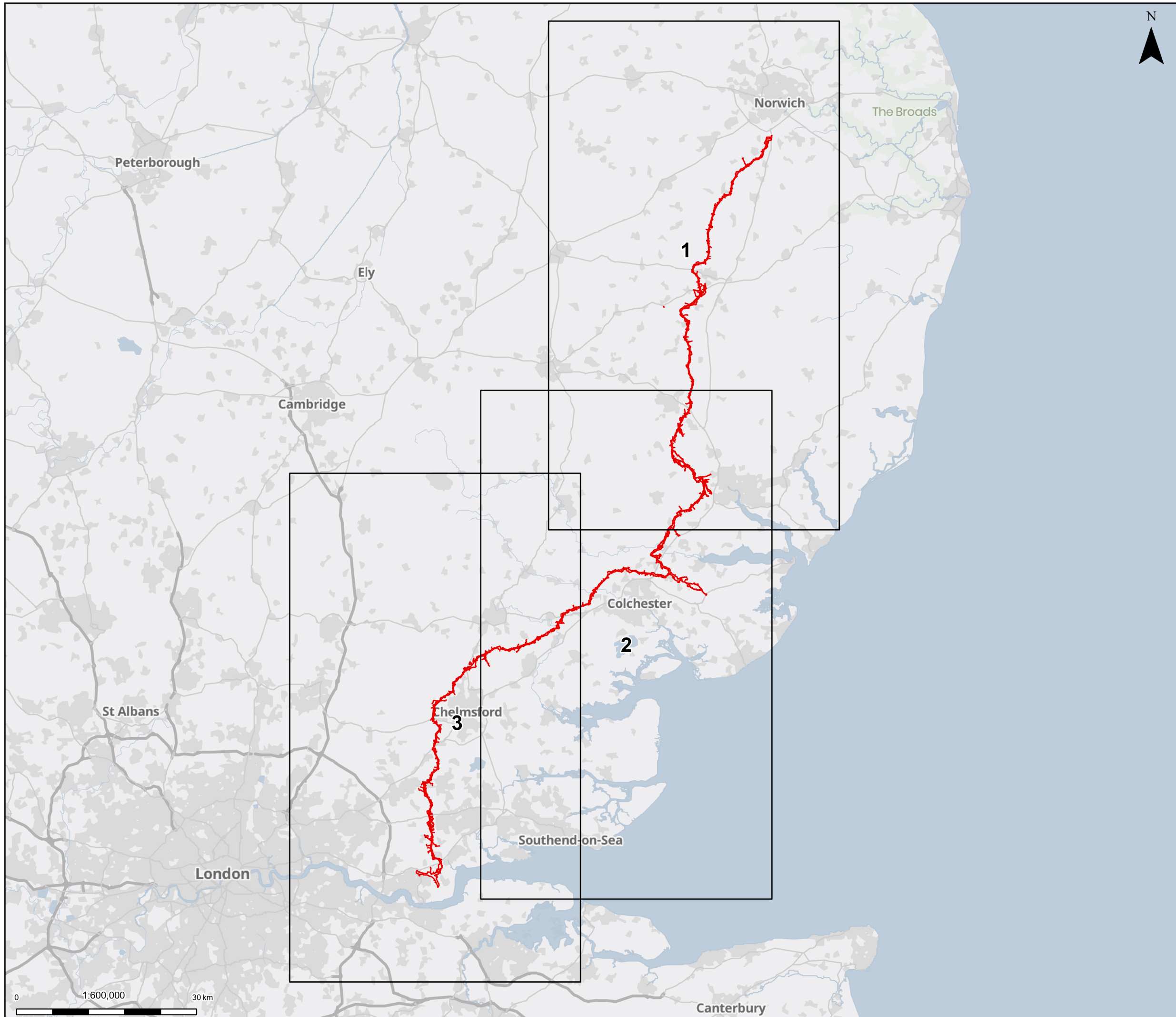
Suitability Description: Accepted as Concept Stage

Drawing Number:	10059280-ARC-EGN-ZZ-DR-ZZ-00916	Revision:	A
-----------------	---------------------------------	-----------	---

Appendix B. IMD 2019 and 2025 Change along the Project

Appendix B IMD 2019 and 2025 Change along the Project

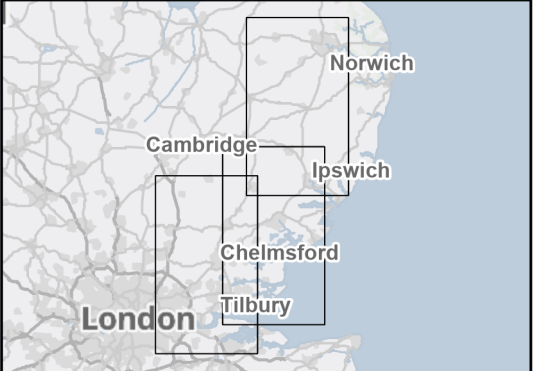
B.1 IMD 2019 and 2025 change along the Project



Order limits
 Pages

Note: For further details regarding the design, please refer to Figures 4.1 (document reference 6.4.F1) and 4.2 (document reference 6.4.F2).

Notes: © Crown copyright and database rights 2025 Ordnance Survey 0100031673, Contains public sector information licensed under the Open Government Licence v3.0, © National Grid UK



Rev	Date	Description	Drawn	Check	Approv
A	May 2026	FOR DCO APPLICATION	SS	AF	KB

PROJECT:
 nationalgrid Norwich to Tilbury

Planning Inspectorate App Number: EN020027
 Regulation 5(2)(a)

Title:
 Figure 2 - Indices of Multiple Deprivation Rank 2019 and 2025 Overview

Designed	S. Shai	Date	May 26
Drawn	S. Sarkar	Date	May 26
Checked	A. Fell	Date	May 26
Approved	K. Burrows	Date	May 26
Scale:	1:600,000	Datum:	AOD
Original Size:	A3	Grid:	OS
Suitability Code:	A2	Project Number:	10059280

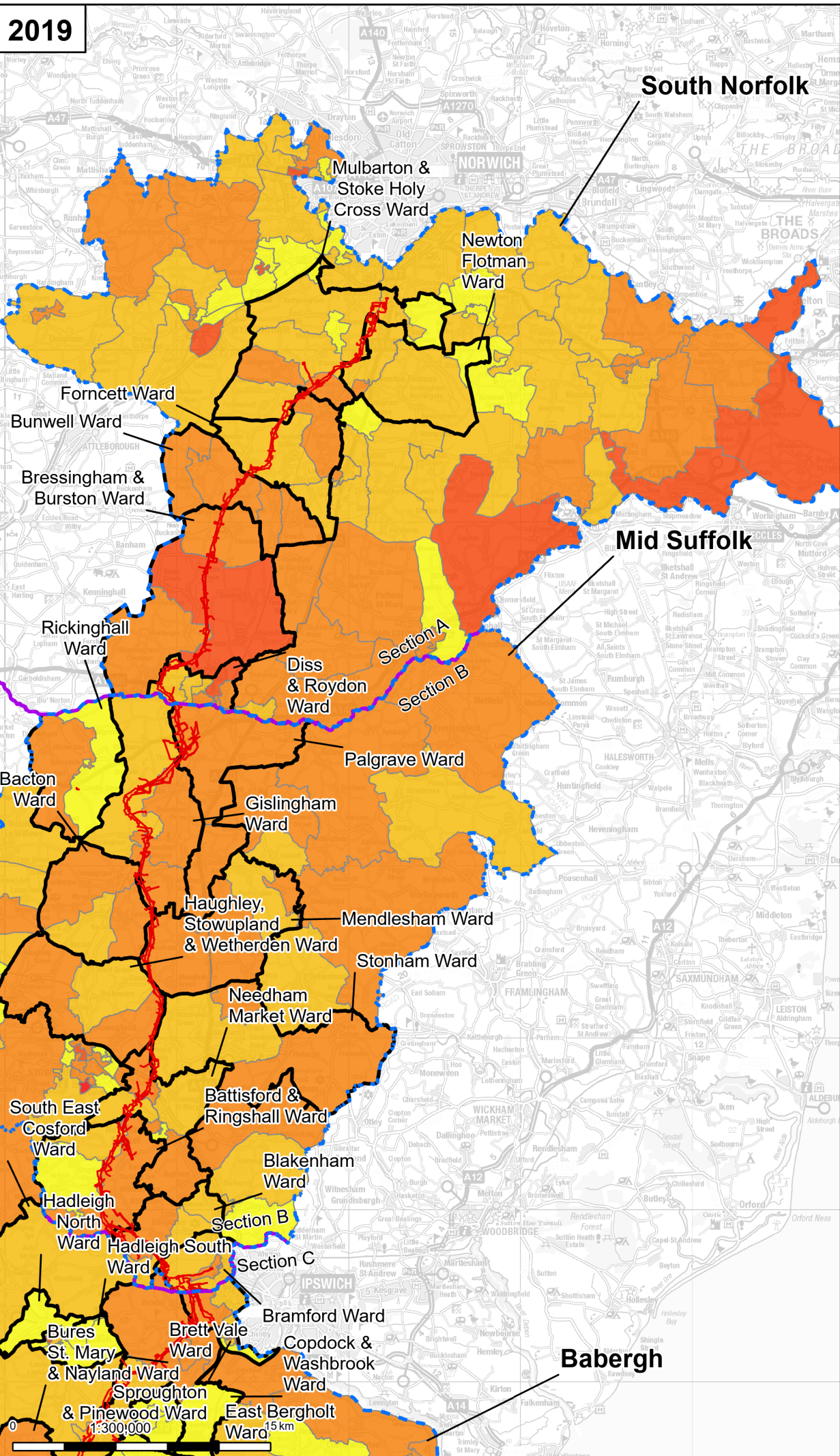
Suitability Description:
 Accepted as Concept Stage

Drawing Number:
 10059280-ARC-EGN-ZZ-DR-ZZ-00910

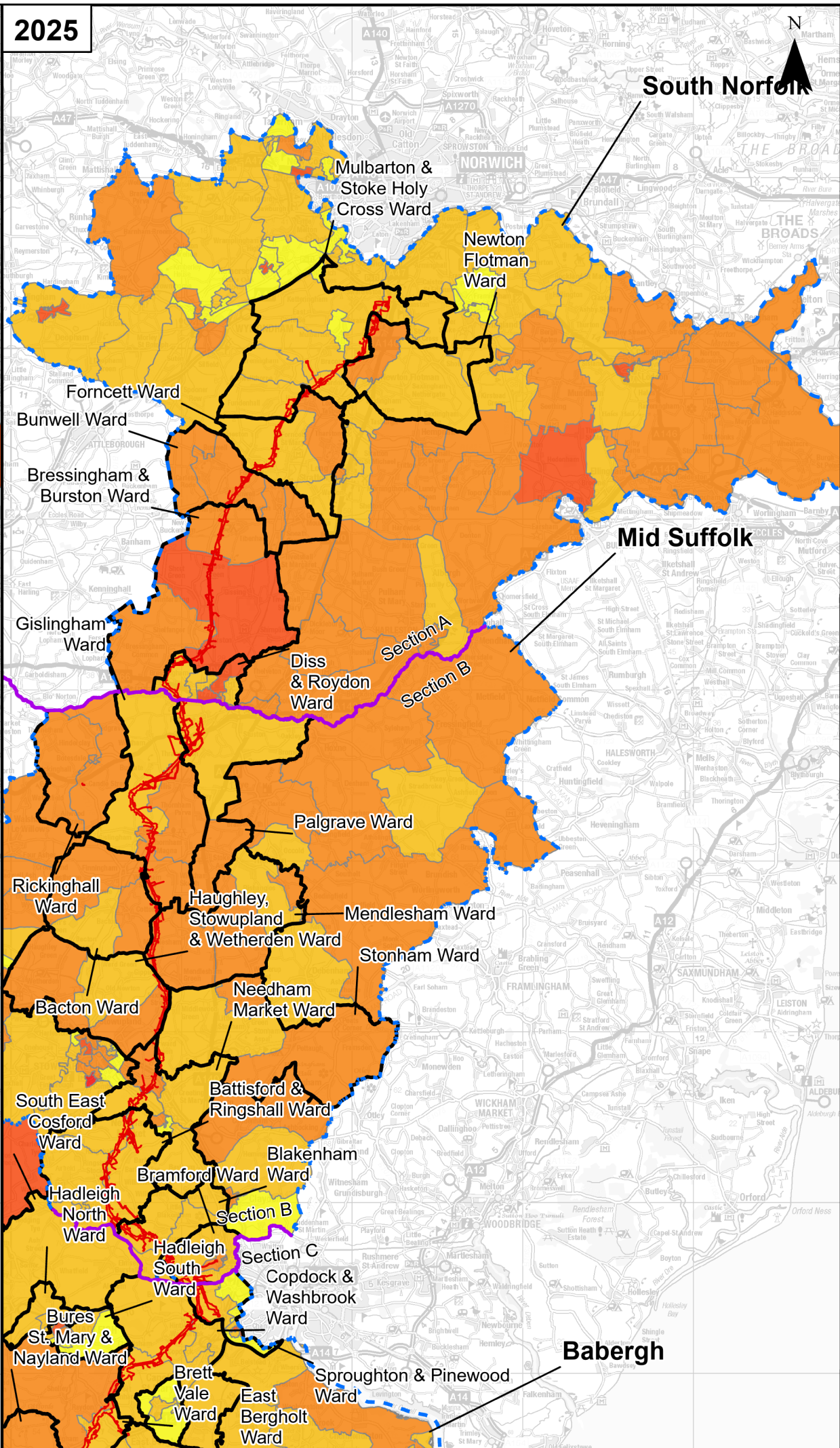
Revision:
 A



2019



2025



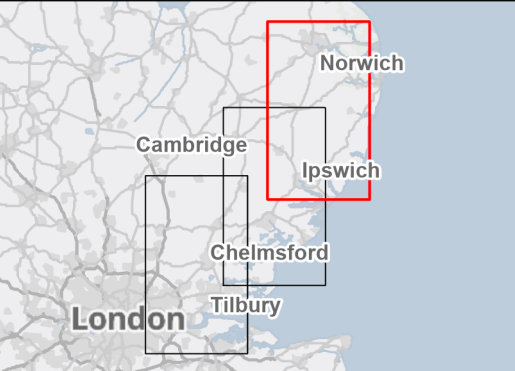
Order limits
 Project section line
 Ward boundary
 Local Authority District Boundary

Discipline specific constraints
 Indices of multiple deprivation rank

- 1 - 2 (most deprived)
- 3 - 4
- 5 - 6
- 7 - 8
- 9 - 10 (least deprived)

Note: For further details regarding the design, please refer to Figures 4.1 (document reference 6.4.F1) and 4.2 (document reference 6.4.F2).

Notes: © Crown copyright and database rights 2025 Ordnance Survey 0100031673, Contains public sector information licensed under the Open Government Licence v3.0, © National Grid UK



Rev	Date	Description	Drawn	Check	Approv
A	May 2026	FOR DCO APPLICATION	SS	AF	KB

PROJECT:
nationalgrid Norwich to Tilbury

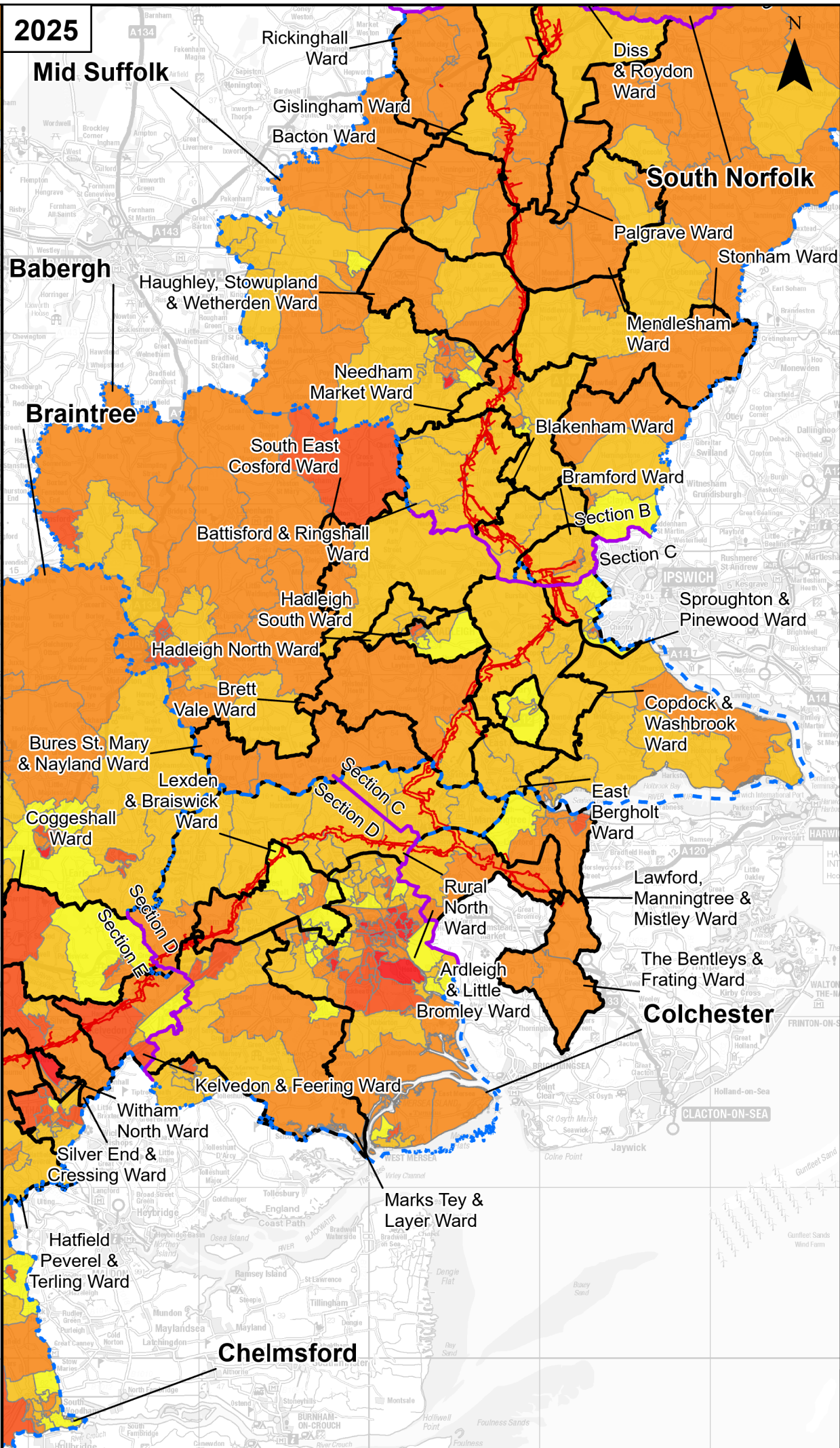
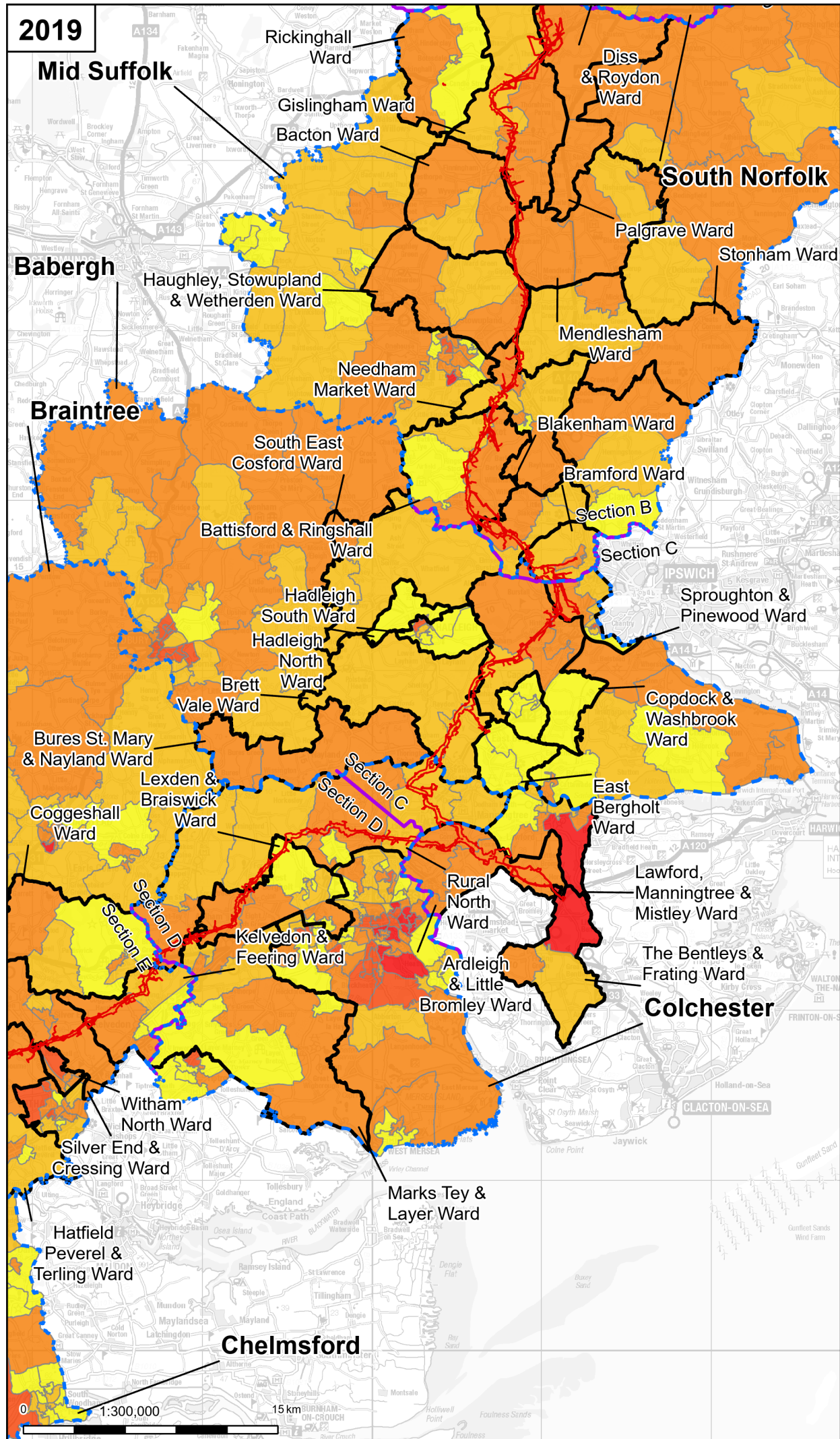
Planning Inspectorate App Number: EN020027
 Regulation 5(2)(a)

Title:
Figure 2 - Indices of Multiple Deprivation Rank 2019 and 2025
 Page 1 of 3

Designed	S. Shai	Date	May 26
Drawn	S. Sarkar	Date	May 26
Checked	A. Fell	Date	May 26
Approved	K. Burrows	Date	May 26
Scale:	1:300,000	Datum:	AOD
Original Size:	A3	Grid:	OS
Suitability Code:	A2	Project Number:	10059280

Suitability Description:
 Accepted as Concept Stage

Drawing Number:	10059280-ARC-EGN-ZZ-DR-ZZ-00910	Revision:	A
-----------------	---------------------------------	-----------	---



Order limits

Project section line

Ward boundary

Local Authority District Boundary

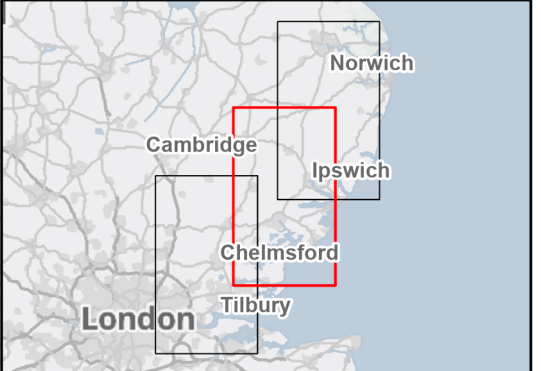
Discipline specific constraints

Indices of multiple deprivation rank

- 1 - 2 (most deprived)
- 3 - 4
- 5 - 6
- 7 - 8
- 9 - 10 (least deprived)

Note: For further details regarding the design, please refer to Figures 4.1 (document reference 6.4.F1) and 4.2 (document reference 6.4.F2).

Notes: © Crown copyright and database rights 2025 Ordnance Survey 0100031673, Contains public sector information licensed under the Open Government Licence v3.0, © National Grid UK



Rev	Date	Description	Drawn	Check	Approv
A	May 2026	FOR DCO APPLICATION	SS	AF	KB

PROJECT: **Norwich to Tilbury**

Planning Inspectorate App Number: EN020027
Regulation 5(2)(a)

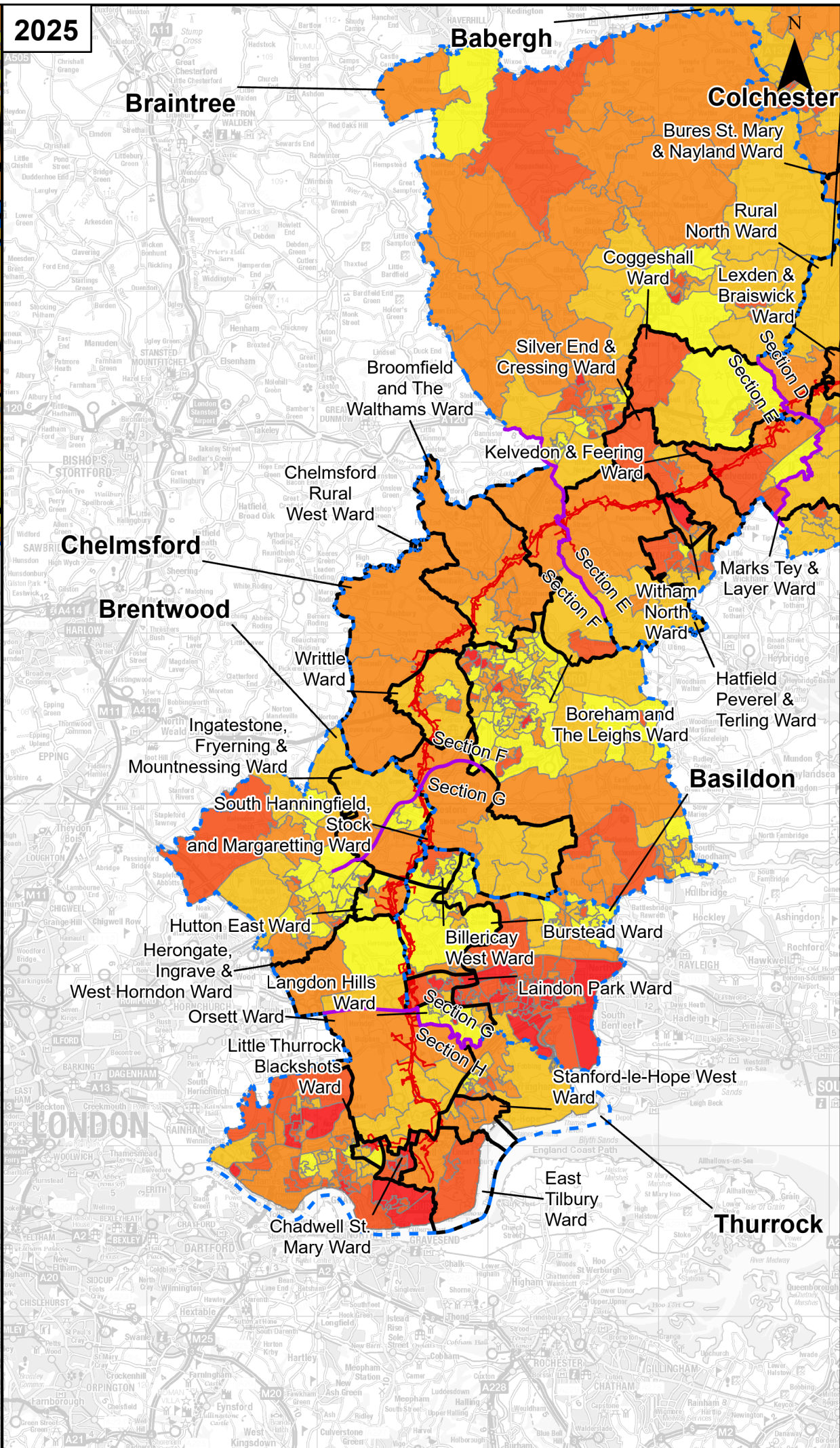
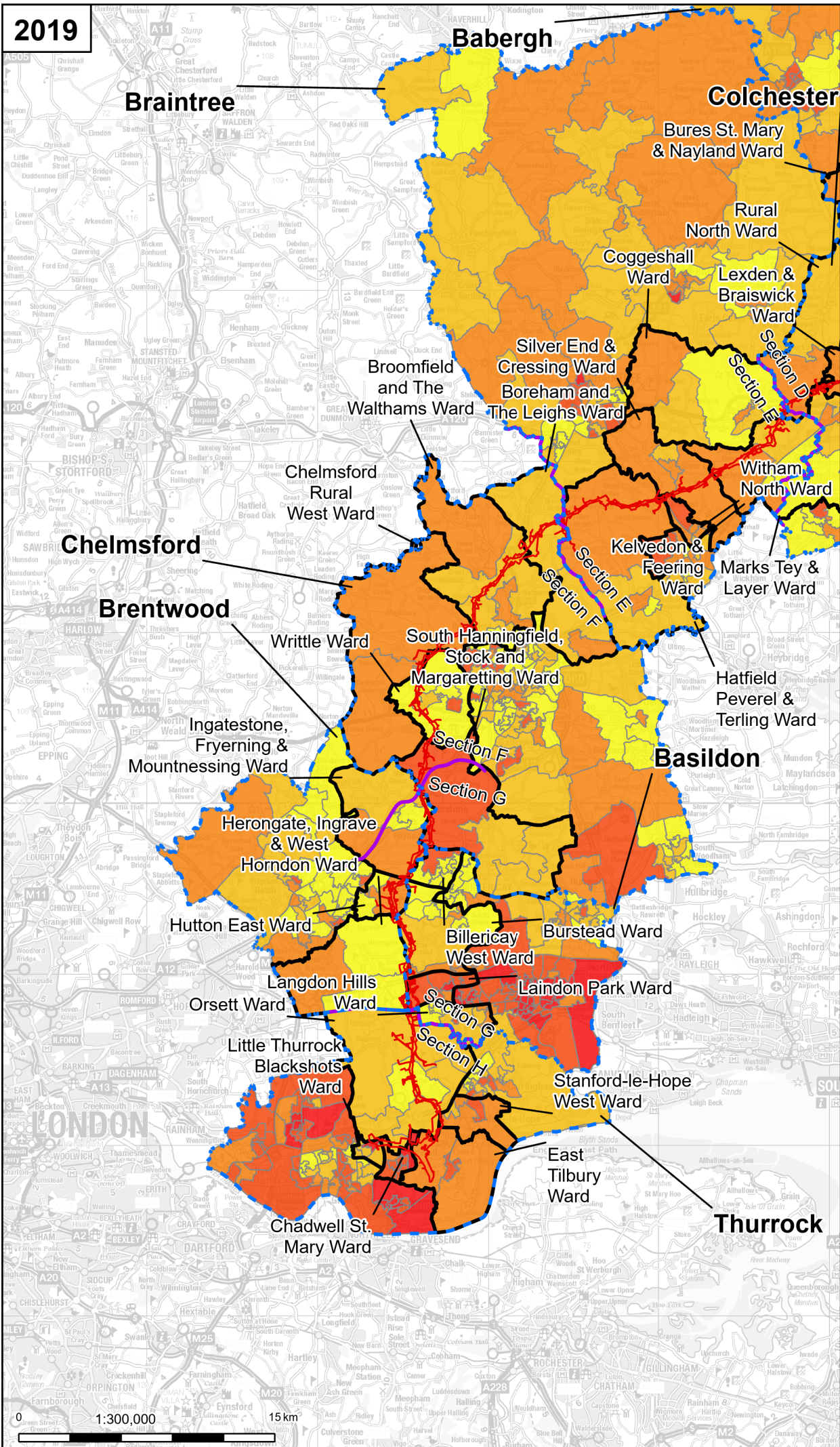
Title: **Figure 2 - Indices of Multiple Deprivation Rank 2019 and 2025**
Page 2 of 3

Designed	S. Shai	Date	May 26
Drawn	S. Sarkar	Date	May 26
Checked	A. Fell	Date	May 26
Approved	K. Burrows	Date	May 26
Scale:	1:300,000	Datum:	AOD
Original Size:	A3	Grid:	OS
Suitability Code:	A2	Project Number:	10059280

Suitability Description: **Accepted as Concept Stage**

Drawing Number: **10059280-ARC-EGN-ZZ-DR-ZZ-00910**

Revision: **A**



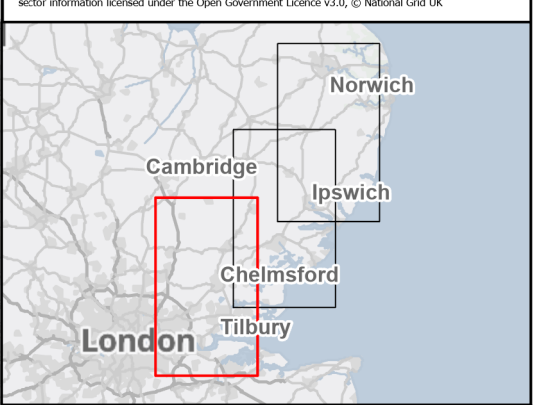
Order limits
 Project section line
 Ward boundary
 Local Authority District Boundary

Discipline specific constraints
 Indices of multiple deprivation rank

- 1 - 2 (most deprived)
- 3 - 4
- 5 - 6
- 7 - 8
- 9 - 10 (least deprived)

Note: For further details regarding the design, please refer to Figures 4.1 (document reference 6.4.F1) and 4.2 (document reference 6.4.F2).

Notes: © Crown copyright and database rights 2025 Ordnance Survey 0100031673, Contains public sector information licensed under the Open Government Licence v3.0, © National Grid UK



Rev	Date	Description	Drawn	Check	Approv
A	May 2026	FOR DCO APPLICATION	SS	AF	KB

PROJECT:
 nationalgrid Norwich to Tilbury

Planning Inspectorate App Number: EN020027
 Regulation 5(2)(a)

Title:
 Figure 2 - Indices of Multiple Deprivation Rank 2019 and 2025
 Page 3 of 3

Designed	S. Shai	Date	May 26
Drawn	S. Sarkar	Date	May 26
Checked	A. Fell	Date	May 26
Approved	K. Burrows	Date	May 26
Scale:	1:300,000	Datum:	AOD
Original Size:	A3	Grid:	OS
Suitability Code:	A2	Project Number:	10059280
Suitability Description: Accepted as Concept Stage			

Drawing Number:
 10059280-ARC-EGN-ZZ-DR-ZZ-00910

Revision:
 A

Appendix C. Change by LSOA Along the Project

Appendix C

Change by LSOA Along the Project

C.1 Change by LSOA along the Project

The table below identifies the change in deprivation ranking for individual LSOAs between the 2019 and 2025 IMD. Note that a positive change reflects an improvement in decile ranking (i.e. less deprived); negative numbers reflect movement into a more deprived decile. The table has been structured according to Project section for ease of reference.

LSOA	Project Section	Ward	IMD Deprivation Decile 2019 (1=most deprived)	IMD Deprivation Decile 2025 (1=most deprived)	Difference
South Norfolk 009B	Section A	Mulbarton & Stoke Holy Cross	7	8	+1
South Norfolk 009D	Section A	Newton Flotman	7	6	-1
South Norfolk 009A	Section A	Mulbarton & Stoke Holy Cross	8	7	-1
South Norfolk 009E	Section A	Mulbarton & Stoke Holy Cross	6	7	-1
South Norfolk 011F	Section A	Forncett	5	6	+1
South Norfolk 011C	Section A	Forncett	7	7	-
South Norfolk 011B	Section A	Bunwell	5	5	-
South Norfolk 014B	Section A	Bressington & Burston	4	4	-
South Norfolk 011A	Section A	Bunwell / Bressington & Burston	5	6	+1
South Norfolk 015E	Section A	Diss & Roydon	8	7	-1
South Norfolk 014A	Section A	Bressington & Burston	5	6	+1
Mid Suffolk 002B	Section B	Gislingham	7	7	-
Mid Suffolk 001C	Section B	Palgrave	6	7	+1
Mid Suffolk 002C	Section B	Gislingham	6	6	-
Mid Suffolk 002A	Section B	Bacton	6	5	-1

LSOA	Project Section	Ward	IMD Deprivation Decile 2019 (1=most deprived)	IMD Deprivation Decile 2025 (1=most deprived)	Difference
Mid Suffolk 005C	Section B	Mendlesham / Gislingham / Bacton	6	6	-
Mid Suffolk 005A	Section B	Haughley, Stowupland & Wetherden	7	7	-
Mid Suffolk 005D	Section B	Haughley, Stowupland & Wetherden / Needham Market	6	6	-
Mid Suffolk 007C	Section B	Stonham	7	7	-
Mid Suffolk 010A	Section B	Needham Market	8	7	-1
Mid Suffolk 009B	Section B	Battisford & Ringshall	7	7	-
Mid Suffolk 011A	Section B	Battisford & Ringshall	6	7	+1
Mid Suffolk 012A	Section B	Bramford	8	7	-1
Mid Suffolk 012B	Section B	Bramford	6	6	-
Mid Suffolk 011E	Section B	Battisford & Ringshall	10	8	-2
Babergh 004F	Section C	South East Cosford	7	7	-
Mid Suffolk 012B	Section C	Bramford	6	6	-
Babergh 004D	Section C	Hadleigh South	10	10	-
Babergh 005C	Section C	Sproughton & Pinewood	6	7	+1
Babergh 005A	Section C	Copdock & Washbrook	6	7	+1
Babergh 010G	Section C	Copdock & Washbrook	8	8	-
Babergh 009C	Section C	Brett Vale	7	6	-1
Babergh 009D	Section C	Bures St Mary & Nayland	6	6	-

LSOA	Project Section	Ward	IMD Deprivation Decile 2019 (1=most deprived)	IMD Deprivation Decile 2025 (1=most deprived)	Difference
Babergh 010D	Section C	Copdock & Washbrook / East Bergholt	9	8	-1
Babergh 010C	Section C	East Bergholt	9	8	-1
Colchester 001A	Section C	Rural North	7	7	-
Colchester 001B	Section C	Rural North	7	7	-
Tendring 005A	Section C	Ardleigh & Little Bromley	6	8	+2
Tendring 003B	Section C	Lawford, Manningtree & Mistley	9	9	-
Tendring 003C	Section C	Lawford, Manningtree & Mistley	5	5	-
Tendring 005B	Section C	Ardleigh & Little Bromley	6	5	-1
Tendring 005C	Section C	Alresford & Elmstead	4	5	+1
Tendring 003E	Section C	Lawford, Manningtree & Mistley / The Bentleys & Frating	2	5	+3
Colchester 001A	Section D	Rural North	7	7	-
Colchester 001C	Section D	Rural North	6	7	+1
Colchester 001D	Section D	Rural North	9	8	-1
Colchester 003A	Section D	Rural North	7	7	-
Colchester 003B	Section D	Lexden & Braiswick	10	10	-
Colchester 003D	Section D	Lexden & Braiswick	6	7	+1
Colchester 010C	Section D	Lexden & Braiswick / Rural North	6	6	-

LSOA	Project Section	Ward	IMD Deprivation Decile 2019 (1=most deprived)	IMD Deprivation Decile 2025 (1=most deprived)	Difference
Colchester 010D	Section D	Marks Tey & Layer	8	8	-
Braintree 014A	Section E	Kelvedon & Feering	8	6	-2
Braintree 014D	Section E	Kelvedon & Feering	6	4	-2
Braintree 015A	Section E	Silver End & Cressing	6	6	-
Braintree 012E	Section E	Silver End & Cressing	5	4	-1
Braintree 012A	Section E	Silver End & Cressing	5	4	-1
Braintree 014C	Section E	Coggeshall	10	9	-1
Braintree 015C	Section E	Witham North	3	2	-1
Braintree 018A	Section E	Hatfield Peverel & Terling	6	6	-
Chelmsford 001A	Section F	Boreham & The Leighs	8	6	-2
Chelmsford 001B	Section F	Broomfield & The Walthams	6	5	-1
Chelmsford 001C	Section F	Broomfield & The Walthams	7	5	-2
Chelmsford 002A	Section F	Broomfield & The Walthams	7	7	-
Chelmsford 003A	Section F	Chelmsford Rural West	5	6	+1
Chelmsford 011A	Section F	Chelmsford Rural West	6	5	-1
Chelmsford 011D	Section F	Writtle	9	8	-1
Chelmsford 011E	Section F	Writtle	7	6	-1
Chelmsford 018B	Section F	South Hanningfield, Stock & Margaretting	3	3	-

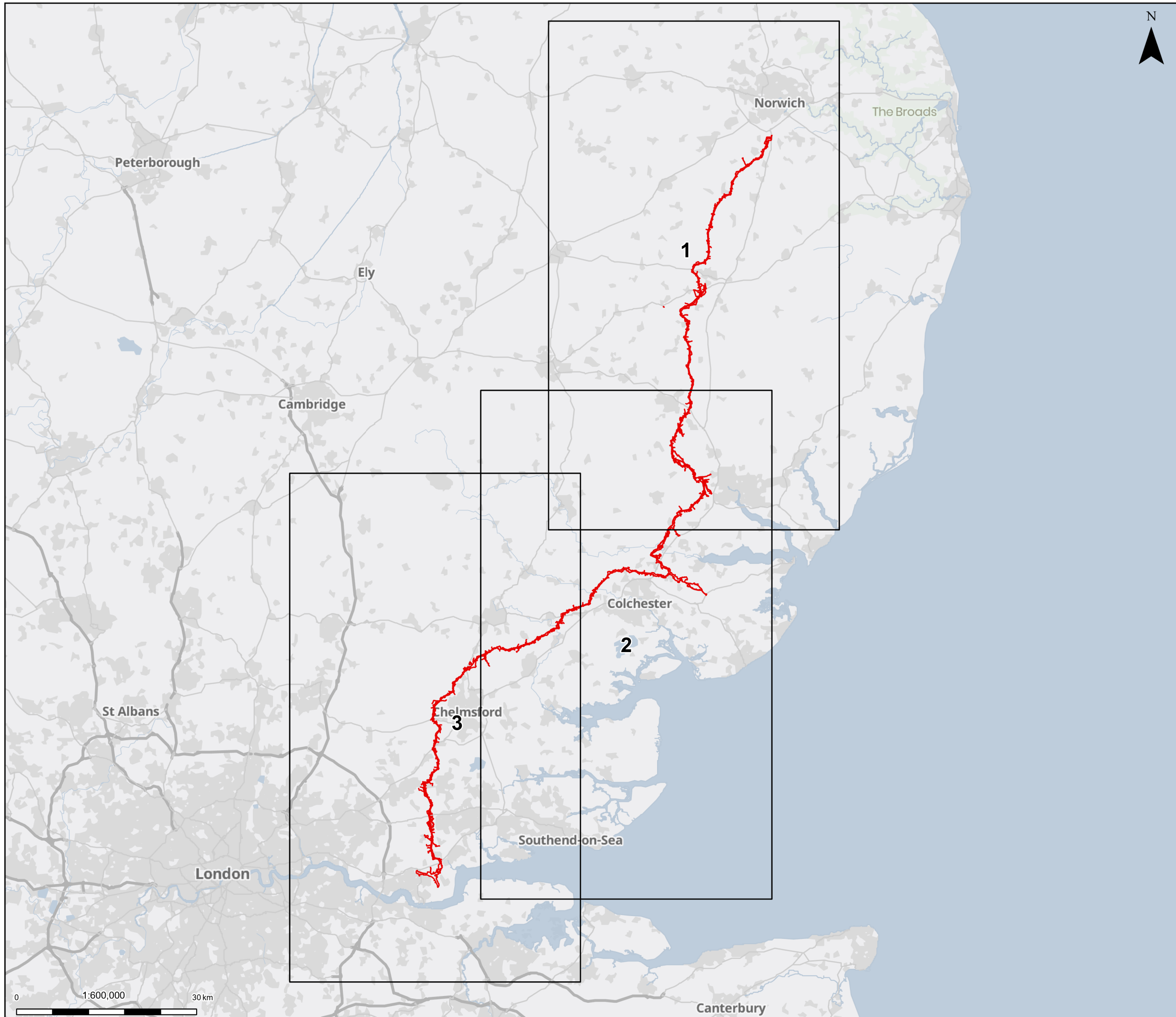
LSOA	Project Section	Ward	IMD Deprivation Decile 2019 (1=most deprived)	IMD Deprivation Decile 2025 (1=most deprived)	Difference
Chelmsford 018B	Section G	South Hanningfield, Stock & Margaretting	3	3	-
Brentwood 002A	Section G	Ingatestone, Fryerning & Mountnessing	7	7	-
Brentwood 002B	Section G	Ingatestone, Fryerning & Mountnessing	10	9	-1
Basildon 002A	Section G	Billericay West	3	3	-
Basildon 002D	Section G	Billericay West	10	10	-
Brentwood 002D	Section G	Ingatestone, Fryerning & Mountnessing	6	6	-
Brentwood 003C	Section G	Hutton East	10	10	-
Brentwood 003B	Section G	Hutton East	5	6	+1
Basildon 004B	Section G	Burstead	10	10	-
Brentwood 005A	Section G	Hutton East	10	10	-
Brentwood 009A	Section G	Herongate, Ingrave & West Horndon	9	9	-
Basildon 009A	Section G	Burstead	8	9	+1
Basildon 010A	Section G	Burstead	6	6	-
Brentwood 009B	Section G	Herongate, Ingrave & West Horndon	9	7	-2
Basildon 014D	Section G	Laindon Park	4	4	-
Basildon 021E	Section G	Langdon Hills	10	10	-
Thurrock 004B	Section H	Orsett	7	6	-1
Thurrock 004D	Section H	Orsett	9	7	-2
Thurrock 004C	Section H	Orsett	7	8	+1

LSOA	Project Section	Ward	IMD Deprivation Decile 2019 (1=most deprived)	IMD Deprivation Decile 2025 (1=most deprived)	Difference
Thurrock 005C	Section H	Stanford Le Hope West	5	6	+1
Thurrock 013D	Section H	East Tilbury	6	5	-1
Thurrock 012F	Section H	Chadwell St Mary	2	1	-1
Thurrock 004A	Section H	Orsett	7	7	-
Thurrock 012E	Section H	Chadwell St Mary	6	6	-
Thurrock 010A	Section H	Little Thurrock Blackshots	2	2	-
Thurrock 010C	Section H	Little Thurrock Blackshots	8	10	+2

**Appendix D.
Health Deprivation
and Disability Domain
Change 2019-2025
Along the Project**

Appendix D Health Deprivation and Disability Domain Change 2019-2025 Along the Project

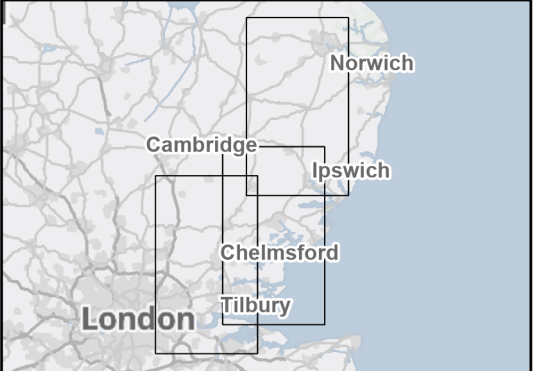
D.1 Health deprivation and disability domain change 2019-2025 along the Project



Order limits
 Pages

Note: For further details regarding the design, please refer to Figures 4.1 (document reference 6.4.F1) and 4.2 (document reference 6.4.F2).

Notes: © Crown copyright and database rights 2025 Ordnance Survey 0100031673, Contains public sector information licensed under the Open Government Licence v3.0, © National Grid UK



Rev	Date	Description	Drawn	Check	Approv
A	May 2026	FOR DCO APPLICATION	SS	AF	KB

PROJECT:
 nationalgrid Norwich to Tilbury

Planning Inspectorate App Number: EN020027
 Regulation 5(2)(a)

Title:
 Figure 3 - Health Deprivation and Disability Deprivation 2019 and 2025 Overview

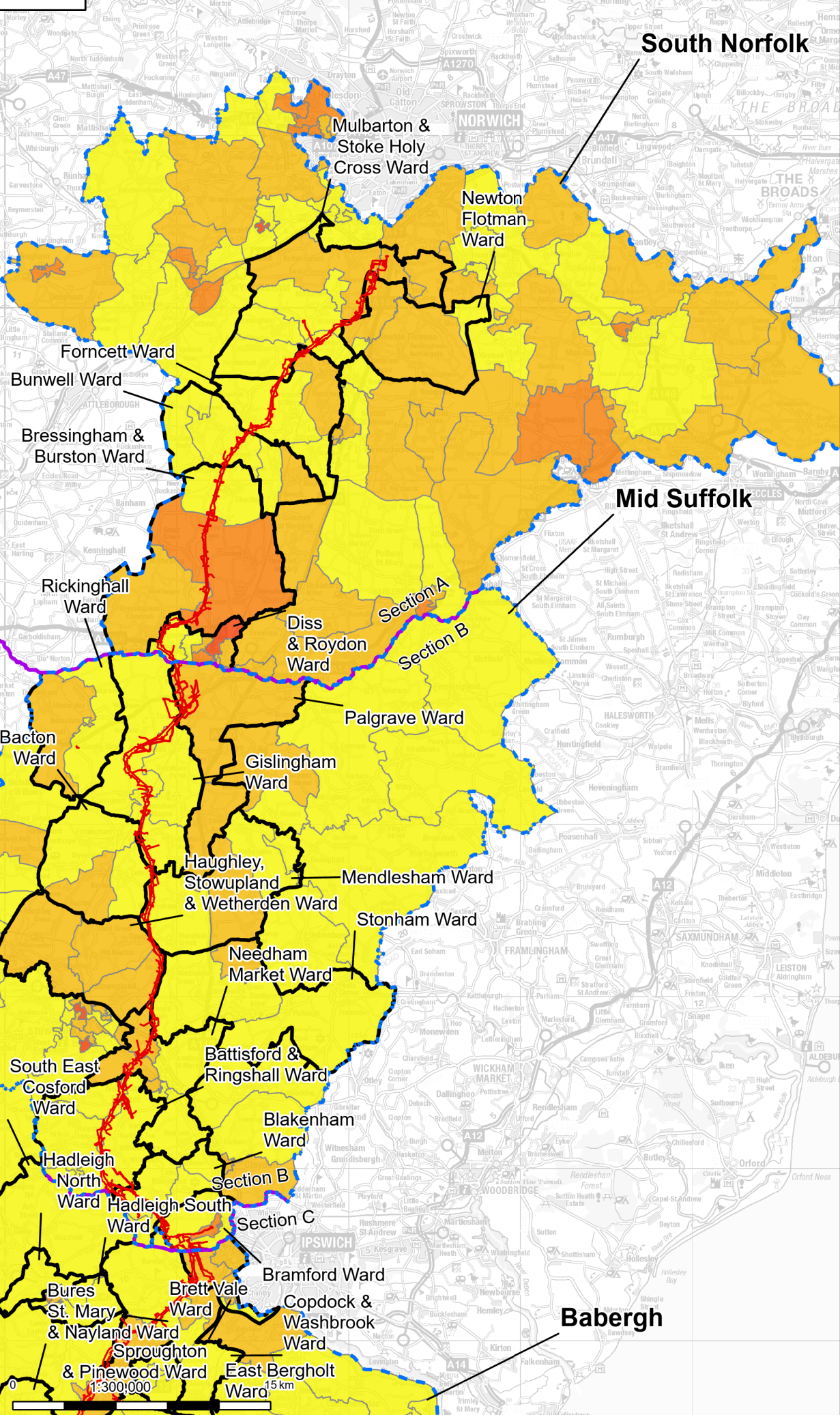
Designed	S. Shai	Date	May 26
Drawn	S. Sarkar	Date	May 26
Checked	A. Fell	Date	May 26
Approved	K. Burrows	Date	May 26
Scale:	1:600,000	Datum:	AOD
Original Size:	A3	Grid:	OS
Suitability Code:	A2	Project Number:	10059280

Suitability Description:
 Accepted as Concept Stage

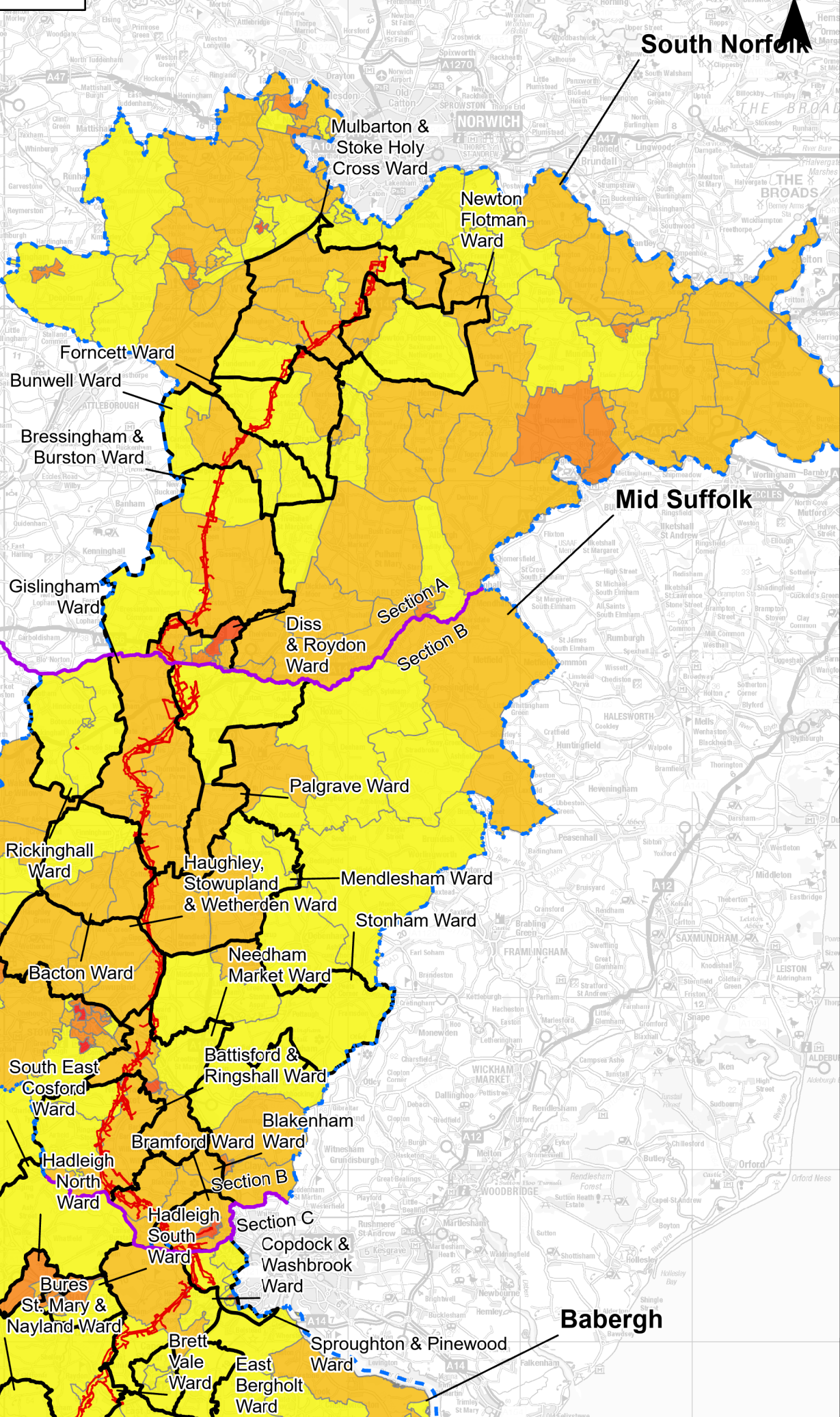
Drawing Number:
 10059280-ARC-EGN-ZZ-DR-ZZ-00912

Revision:
A

2019



2025



Order limits

Project section line

Ward boundary

Local Authority District Boundary

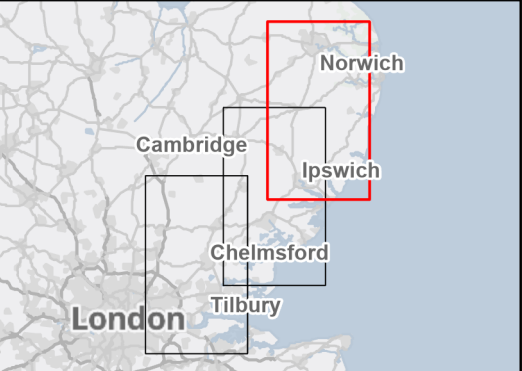
Discipline specific constraints

Health Deprivation and Disability Deprivation

- 1 - 2 (most deprived)
- 3 - 4
- 5 - 6
- 7 - 8
- 9 - 10 (least deprived)

Note: For further details regarding the design, please refer to Figures 4.1 (document reference 6.4.F1) and 4.2 (document reference 6.4.F2).

Notes: © Crown copyright and database rights 2025 Ordnance Survey 0100031673, Contains public sector information licensed under the Open Government Licence v3.0, © National Grid UK



Rev	Date	Description	Drawn	Check	Approv
A	May 2026	FOR DCO APPLICATION	SS	AF	KB

PROJECT: **nationalgrid** Norwich to Tilbury

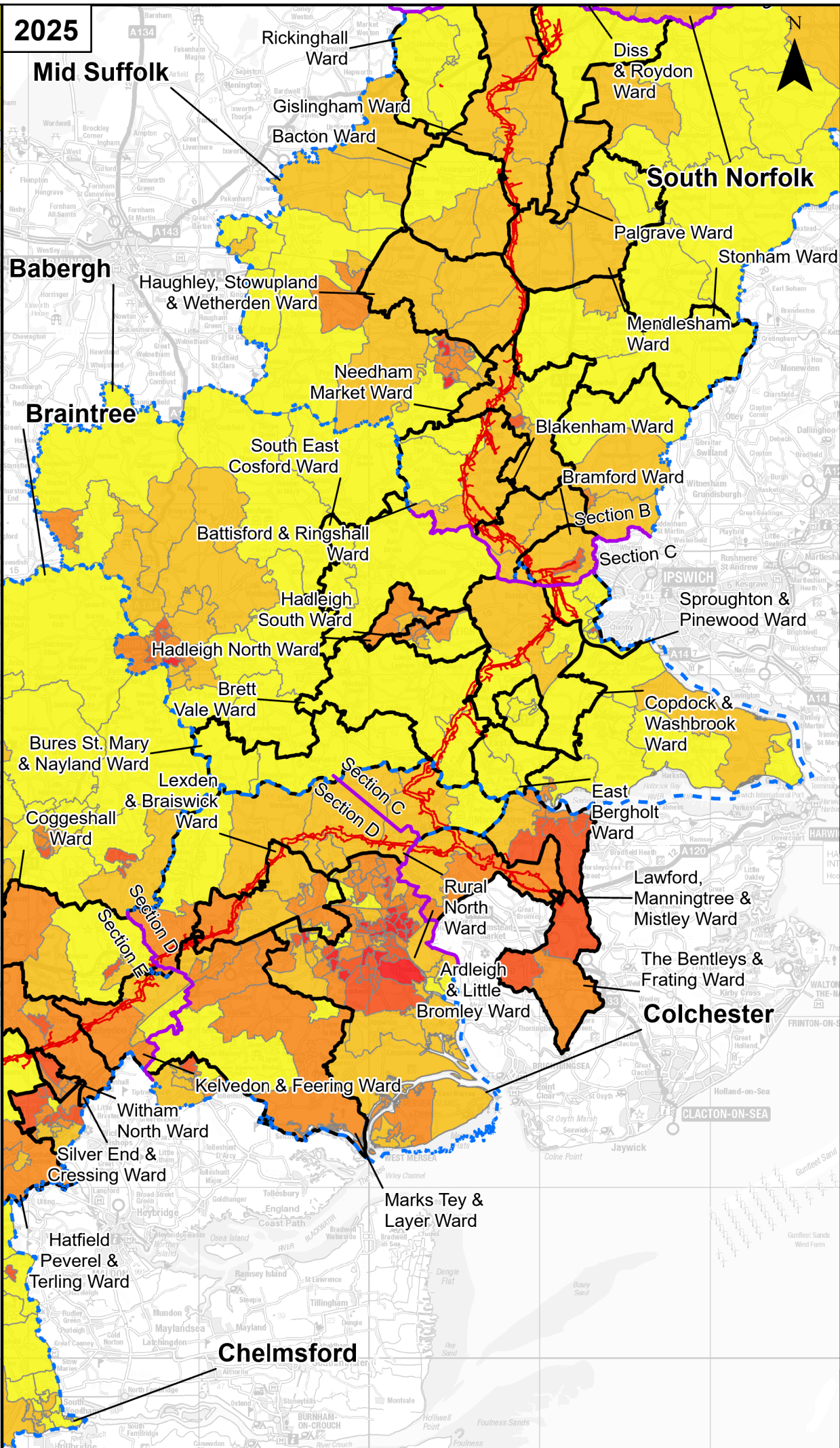
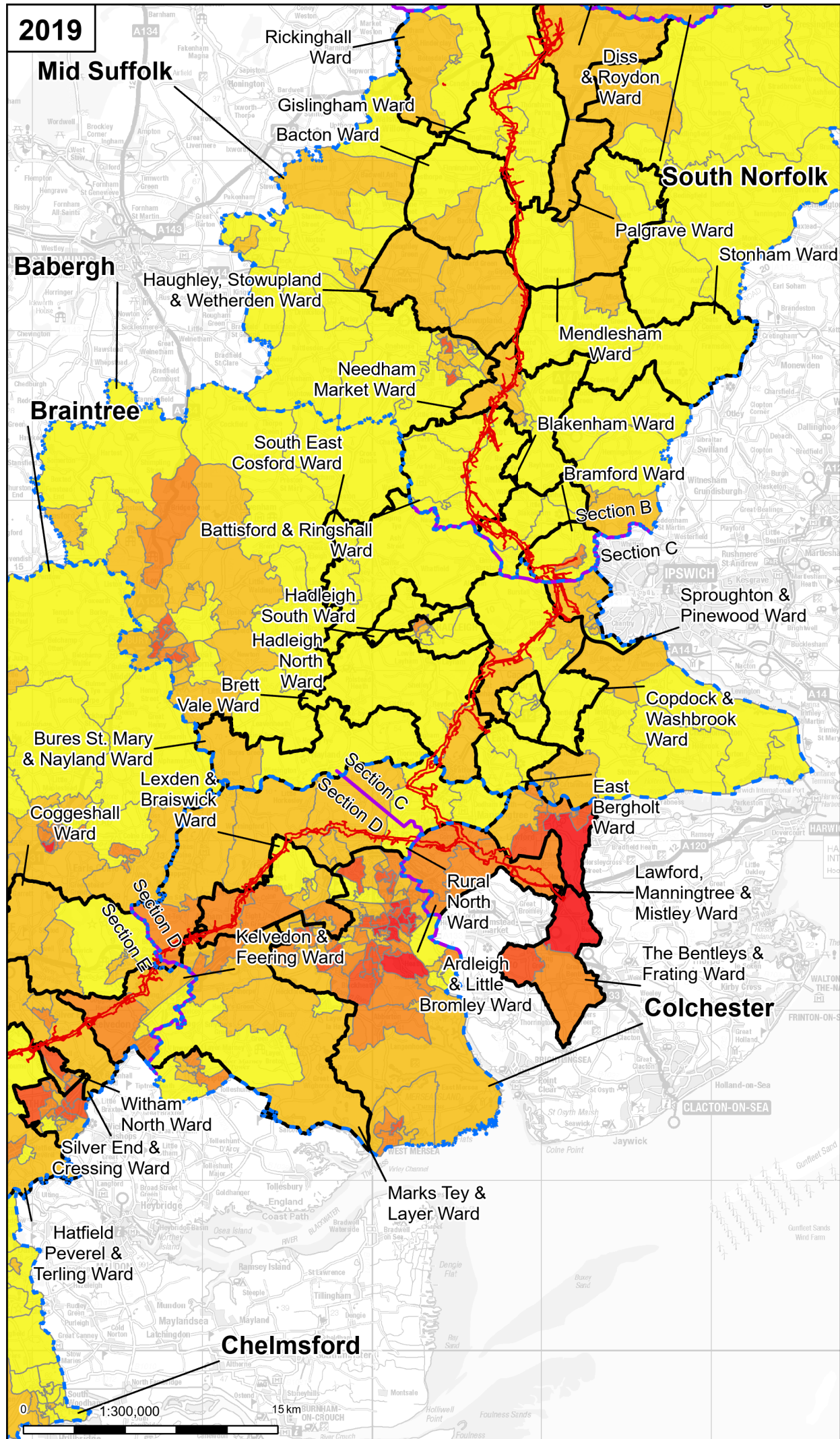
Planning Inspectorate App Number: EN020027 Regulation 5(2)(a)

Title: **Figure 3 - Health Deprivation and Disability Deprivation 2019 and 2025 Page 1 of 3**

Designed	S. Shai	Date	May 26
Drawn	S. Sarkar	Date	May 26
Checked	A. Fell	Date	May 26
Approved	K. Burrows	Date	May 26
Scale:	1:300,000	Datum:	AOD
Original Size:	A3	Grid:	OS
Suitability Code:	A2	Project Number:	10059280

Suitability Description: **Accepted as Concept Stage**

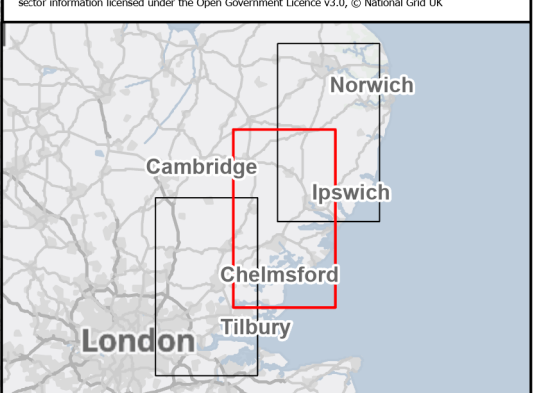
Drawing Number:	10059280-ARC-EGN-ZZ-DR-ZZ-00912	Revision:	A
-----------------	---------------------------------	-----------	---



Order limits
 Order limits
 Project section line
 Ward boundary
 Local Authority District Boundary

Discipline specific constraints
 Health Deprivation and Disability Deprivation
 1 - 2 (most deprived)
 3 - 4
 5 - 6
 7 - 8
 9 - 10 (least deprived)

Note: For further details regarding the design, please refer to Figures 4.1 (document reference 6.4.F1) and 4.2 (document reference 6.4.F2).



Rev	Date	Description	Drawn	Check	Approv
A	May 2026	FOR DCO APPLICATION	SS	AF	KB

PROJECT:
nationalgrid Norwich to Tilbury

Planning Inspectorate App Number: EN020027
 Regulation 5(2)(a)

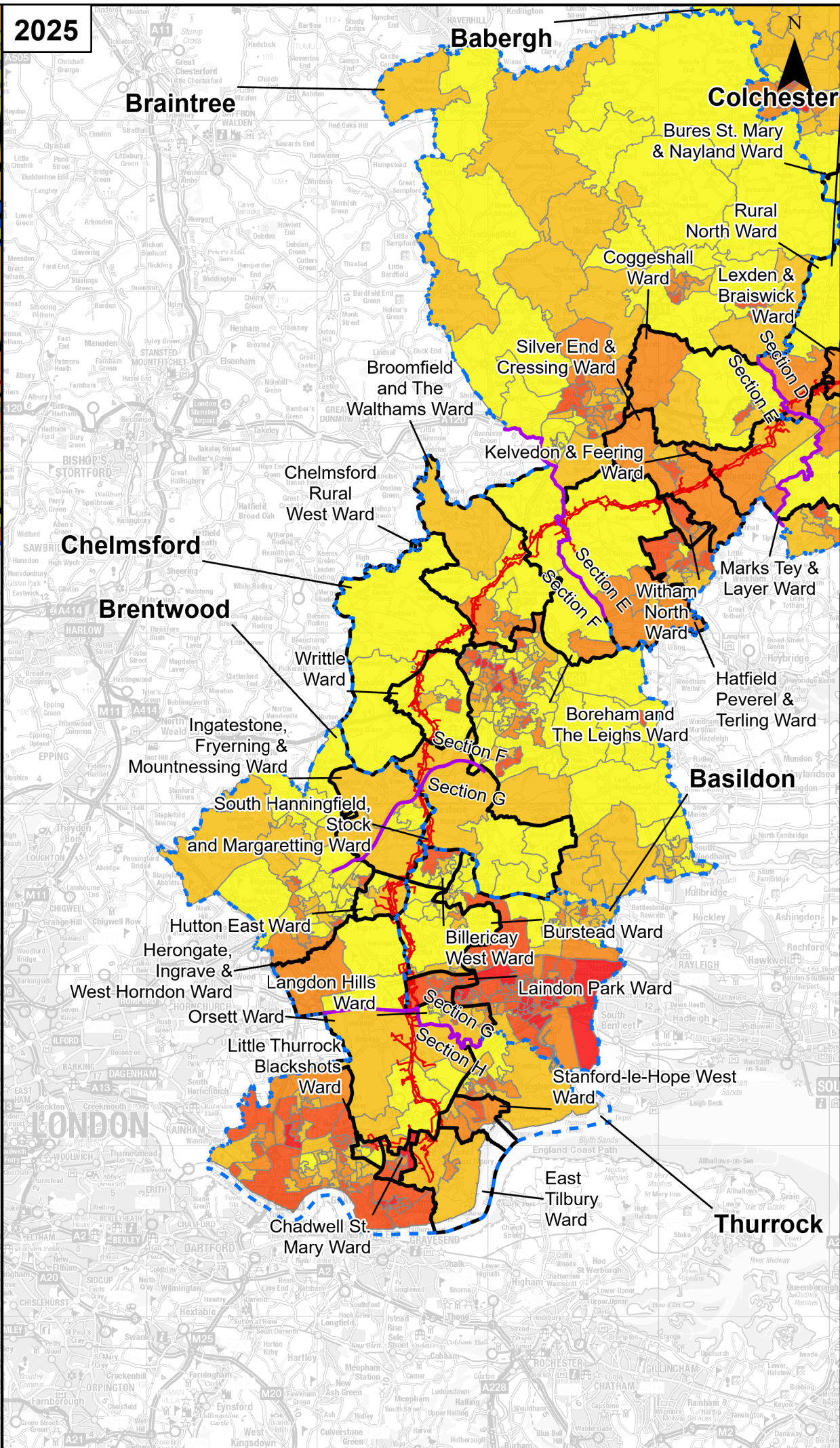
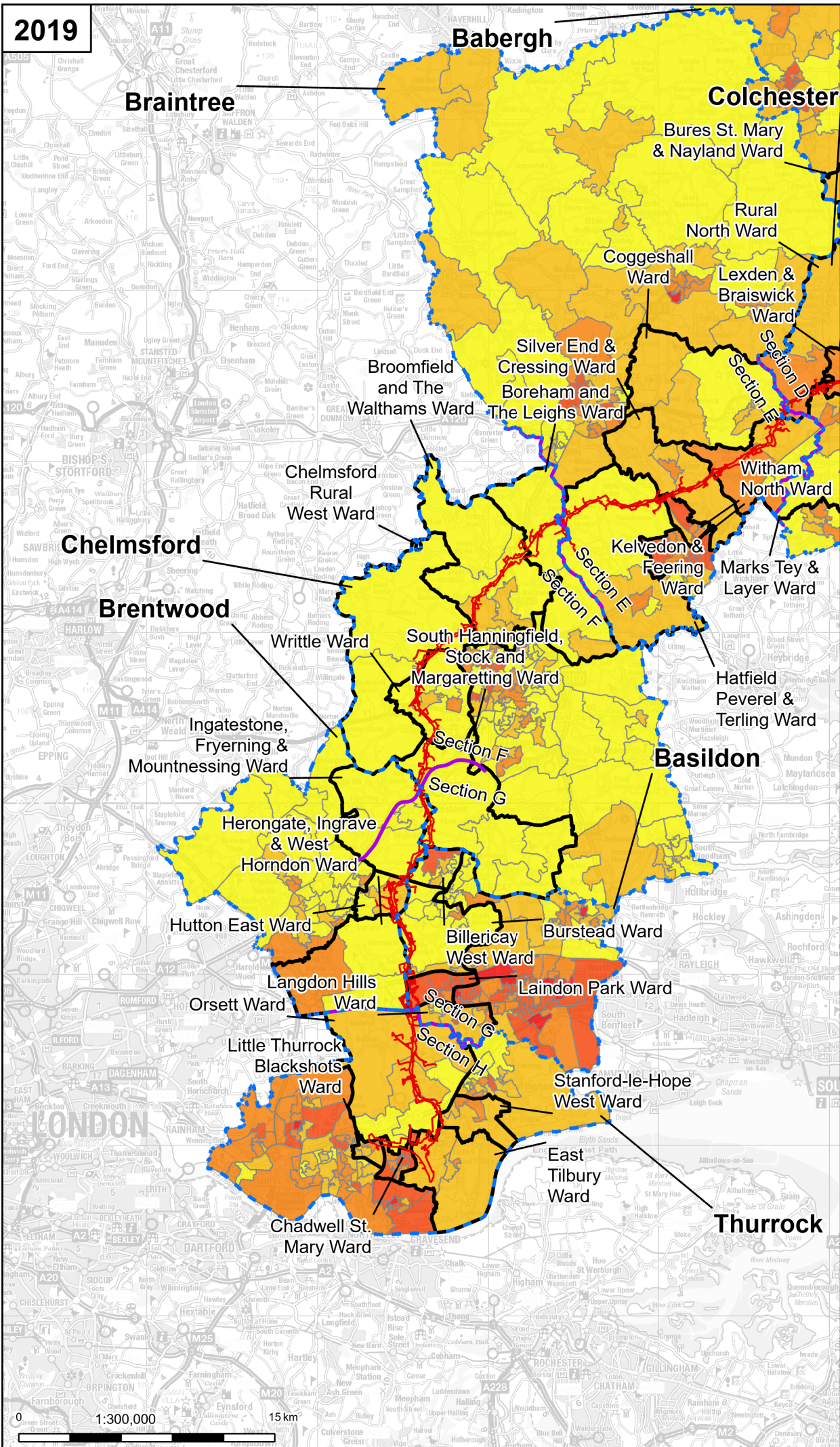
Title:
Figure 3 - Health Deprivation and Disability Deprivation 2019 and 2025
 Page 2 of 3

Designed	S. Shai	Date	May 26
Drawn	S. Sarkar	Date	May 26
Checked	A. Fell	Date	May 26
Approved	K. Burrows	Date	May 26
Scale:	1:300,000	Datum:	AOD
Original Size:	A3	Grid:	OS
Suitability Code:	A2	Project Number:	10059280

Suitability Description:
 Accepted as Concept Stage

Drawing Number:
 10059280-ARC-EGN-ZZ-DR-ZZ-00912

Revision:
 A



Order limits
 Project section line
 Ward boundary
 Local Authority District Boundary

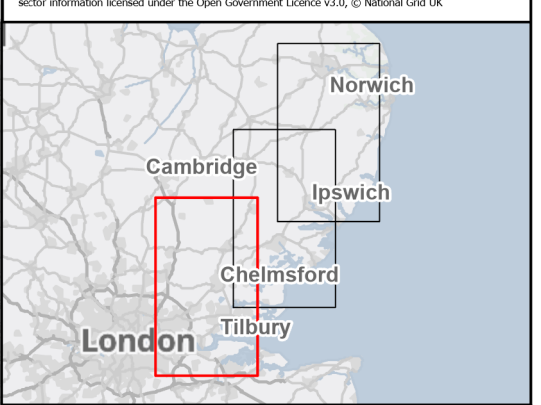
Discipline specific constraints

Health Deprivation and Disability Deprivation

- 1 - 2 (most deprived)
- 3 - 4
- 5 - 6
- 7 - 8
- 9 - 10 (least deprived)

Note: For further details regarding the design, please refer to Figures 4.1 (document reference 6.4.F1) and 4.2 (document reference 6.4.F2).

Notes: © Crown copyright and database rights 2025 Ordnance Survey 0100031673, Contains public sector information licensed under the Open Government Licence v3.0, © National Grid UK



Rev	Date	Description	Drawn	Check	Approv
A	May 2026	FOR DCO APPLICATION	SS	AF	KB

PROJECT:
nationalgrid Norwich to Tilbury

Planning Inspectorate App Number: EN020027
 Regulation 5(2)(a)

Title:
Figure 3 - Health Deprivation and Disability Deprivation 2019 and 2025
 Page 3 of 3

Designed	S. Shai	Date	May 26
Drawn	S. Sarkar	Date	May 26
Checked	A. Fell	Date	May 26
Approved	K. Burrows	Date	May 26
Scale:	1:300,000	Datum:	AOD
Original Size:	A3	Grid:	OS
Suitability Code:	A2	Project Number:	10059280

Suitability Description:
 Accepted as Concept Stage

Drawing Number:
 10059280-ARC-EGN-ZZ-DR-ZZ-00912

Revision:
 A

National Grid plc
National Grid House,
Warwick Technology Park,
Gallows Hill, Warwick.
CV34 6DA United Kingdom

Registered in England and Wales
No. 4031152
nationalgrid.com